

**TECHNICAL MANUAL**

**ORGANIZATIONAL, DIRECT SUPPORT, AND GENERAL SUPPORT MAINTENANCE  
REPAIR PARTS AND SPECIAL TOOLS LISTS  
(INCLUDING DEPOT MAINTENANCE REPAIR PARTS AND SPECIAL TOOLS)**

**FOR**

**ELECTRONICS SHOP, SEMI-TRAILER MOUNTED  
AN/ALM -153  
(NSN 4940-01-018-2505)**

---

**HEADQUARTERS, DEPARTMENT OF THE ARMY  
DECEMBER 1978**



ORGANIZATIONAL, DIRECT SUPPORT, AND GENERAL SUPPORT  
MAINTENANCE REPAIR PARTS AND SPECIAL TOOLS LISTS  
(INCLUDING DEPOT MAINTENANCE REPAIR PARTS AND SPECIAL TOOLS)  
FOR  
ELECTRONICS SHOP, SEMI-TRAILER MOUNTED AN/ALM-153  
(NSN 4940-01-018-2505)  
*Current as of 9 August 1978*

**REPORTING OF ERRORS**

You can improve this manual by recommending improvements using DA Form 2028-2 located in the back of the manual. Simply tear out the self addressed form, fill it out as shown, and drop it in the mail.

If there are no blank DA Form 2028-2 in the back of your manual, use the standard DA Form 2028 (Recommended Changes to Publications and Blank Forms) and forward to the Commander, US Army Communications and Electronics Materiel Readiness Command, ATTN: DRSEL-ME-MQ, Fort Monmouth, NJ 07703.

In either case a reply will be furnished direct to you.

Table of Contents

		Page	Illus Figure
SECTION I.	Introduction.....	1	
	II. Repair parts list .....	5	
Group	00 Electronics Shop, Semi-trailer Mounted AN/ALM-153 .....	5	1
	01 Semi-trailer Van V-499/ALM-153, Unit 1 (No parts authorized)		
	02 Terminal, Data, Hazeltine Model 2000, Unit 2 (See TM 11-6625-2656-24P for parts)		
	03 Recorder/Reproducer, Magnetic Tape RD-392/U, Unit 3 (See TM 11-5835-242-24P for parts)		
	04 Interface Unit J-3238/ALM-153, Unit 4 (See TM 11-5895-829-24P for parts)		
	05 Synthesizer, Frequency 0-1672/ALQ-133, Unit 5 (See TM 11-5895-831-24P for parts)		
	06 Power Divider CU-2104/ALQ-133, Unit 6 (See TM 11-5895-831-24P for parts)		
	07 Converter, Frequency CV-3174/ALQ-133, Unit 7 (See TM 11-5895-831-24P for parts)		
	08 Indicator-Control C-9538/ALQ-133, Unit 8 (See TM 11-5895-831-24P for parts)		
	09 Monitor-Controller C-9537/ALQ-133, Unit 9 (See TM 11-5895-831-24P for parts)		
	10 Panel, Maintenance-Operator Control C-9632/ALM-153, Unit 10 (See TM 11-6625-2649-24P for parts)		
	11 Computer Set, Digital AN/UYK-23, Unit 11 (See TM 11-7440-269-24P for parts)		
	12 Panel, Maintenance-Operator Control C-9633/UYK-23, Unit 12 (See TM 11-7440-269-24P)		
	13 Control, Power Supply C-9536/ALQ-133, Unit 13 (See TM 11-5895-831-24P for parts)		
	14 Power Supply (TD15-14), Unit 14 (No parts authorized)		
	15 Power Supply (7D15-7), Unit 15 (No parts authorized)		
	16 Power Supply (8D362A), Unit 16 (No parts authorized)		
	17 Power Supply PP-7035/ALQ-133, Unit 17 (See TM 11-5895-831-24P for parts)		
	18 Test Set, Comparator TS-3447/ALM-153, Unit 18 (See TM 11-6625-2646-24P for parts)		
	19 Simulator, Navigation SM-699/ALM-153, Unit 19 (See TM 11-6625-2647-24P for parts)		
	20 Simulator, Comparator SM-700/ALM-153, Unit 20 (No parts authorized)		
	21 Power Divider CU-2105/ALM-153, Unit 21 (See TM 11-6625-2651-24P for parts)		
	22 Control, Synthesizer Scan C-9539/ALM-153, Unit 22 (See TM 11-6625-2654-24P for parts)		
	23 Carrier, Pod V-474/ALM-153, Unit 23 (No parts authorized)		
	24 Test Set, Multimeter AN/USM-223A, Unit 24 (See TM 11-6625-654-24P for parts)		
	25 Oscilloscope AN/USM-281C, Unit 25 (See TM 11-6625-2658-14 for parts)		
	26 Dual Trace Amplifier AM-6880/U, Tektronics Model 7A18N, Option 6, Unit 26 (See TM 11-6625-2760-14&P for parts)		

	Page	Illus Figure
27	Probe, Tektronics Model 6053, Unit 27 (No parts authorized)	
28	Dummy Load DA-75/U, Unit 28 (No parts authorized)	
29	Multimeter, Digital ME-496/U, Unit 29 (no parts authorized)	
30	Wattmeter AN/URM-120, Unit 30 (See TM 11-6625-446-40P for parts)	
31	Frequency Counter TD-1225(V)1/U, HP Model 5340AR-001, Unit 31 (See TM 11-6625-2808-24P for parts)	
32	Vector Voltmeter, HP Model 8405AR, Unit 32 (See TM 11-6625-2856-14&P for parts)	
33	Accessory Kit, HP Model 11570A, Unit 33 (No parts authorized)	
34	Spectrum Analyzer IP-1216(P)/GR HP Model 141T, Unit 34 (See TM 11-6625-2781-14&P for parts)	
35	RF Plug-in PL-1400/U, HP Model 8555A, Unit 35 (See TM 11-6625-2781-24P-4 for parts)	
36	IF Plug-in PL-1388/U, HP Model 8552B, Unit 36 (See TM 11-6625-2781-24P-1 for parts)	
37	Tracking Preselector F-1414/U, HP Model 8445B, Unit 37 (See TM 11-6625-2781-24P-6 for parts)	
38	Pulse Generator, Data Pulse Model 101, Unit 38 (See TM 11-6625-2743-24P for parts)	
39	RF Power Meter, Boonton Model 42BD, Options 1 and 9, Unit 39 (See TM 11-6625-2857-24P for parts)	
40	RF Detector, Boonton Model 41-4E, Unit 40 (No parts authorized)	
41	Signal Generator, HP Model 8660C-100, Unit 41 (See TM 11-6625-2837-24P-1 for parts)	
42	Frequency Extension Module, HP Model 11661B, Unit 42 (See TM 11-6625-2837-24P-1 for parts)	
43	RF Plug-in, HP Model 86603A, Unit 43 (See TM 11 -6625-2837-24P-4 for parts)	
44	AM/Pulse Module Plug-in, HP Model 86631B, Unit 44 (See TM 11-6625-2837-24P-3 for parts)	
45	AM/FM Module Plug-in, HP Model 86632, Unit 45 (See TM 11 -6625-2837-24P-2 for parts)	
46	Signal Generator SG -735/URM-165, HP Model 8616A, Unit 46 (See TM 11-6625-2820-14&P for parts)	
47	Signal Generator AN/URM-170, HP Model 618CR, Unit 47 (See TM 11-6625-2520-24P for parts)	
48	Signal Generator SG -944/U, HP Model 620B, Unit 48 (See TM 11-6625-2520-24P-1 for parts)	
49	Signal Generator AN/USM-47, HP Model 626A, Unit 49 (See TM 11-6625-2910-24P for parts)	
50	Signal Generator AN/USM-48, HP Model 628A, Unit 50 (See TM 11-6625-2909-24P for parts)	
51	Battery Assembly, Unit 51 (No parts authorized)	
52	Attenuator, Variable CN-796A, Unit 52 (No parts authorized)	
53	Attenuator, Fixed CN-1197/U, Unit 53 (No parts authorized)	
54	Attenuator, Fixed CN-1198/U, Unit 54 (No parts authorized)	
55	Attenuator, Fixed CN-1199/U, Unit 55 (No parts authorized)	
56	Attenuator, Fixed CN-1200/U, Unit 56 (No parts authorized)	
57	Attenuator, Fixed CN-1201/U, Unit 57 (No parts authorized)	
58	Interconnect Cable Group, Unit 58	
	Interconnect Cable Group .....	11 2
	Cable Assemblies W1 thru W4 and W6 .....	13 3
	Cable Assemblies W7 thru W10 and W12 .....	15 4
	Cable Assemblies W13 thru W16 .....	17 5
	Cable Assemblies, W18 thru W21 and W24 .....	19 6
	Cable Assemblies W25, W26, W29, W30, and W32.....	21 7
	Cable Assemblies W33, W35, W37, W39, and W40 .....	23 8
	Cable Assemblies W1 thru W45 .....	25 9
	Cable Assemblies, W46 thru W50 .....	27 10
	Cable Assemblies W51, W52, W54, W55, and W56 .....	29 11
	Cable Assemblies W57, W58, and W63 .....	31 12
	Cable Assemblies W76 thru W80 .....	33 13
	Cable Assemblies W82, W86, W90, W91 and W92 .....	35 14
	Cable Assemblies W93 thru W96 .....	37 15
	Resistor Termination Assembly .....	39 16
59	Digital Modem MD-939/USQ-61, Unit 59 (See TM 11-7035-200-24P for parts)	
60	Power Supply PP-7036/USQ-61, Unit 60 (See TM 11-7035-200-24P for parts)	
SECTION III.	Special Tools List (Not applicable)	
IV.	National Stock Number and Part Number Index.....	40

**SECTION I  
INTRODUCTION**

**1. Scope**

This manual lists spares and repair parts; special tools; special test, measurement, and diagnostic equipment (TMDE), and other special support equipment required for performance of organizational, direct support and general support maintenance of the AN/ALM-153. It authorizes the requisitioning and issue of spares and repair parts as indicated by the source and maintenance codes.

**2. General**

This Repair Parts and Special Tools List is divided into the following sections:

*a. Section II. Repair Parts List.* A list of spares and repair parts authorized for use in the performance of maintenance. The list also includes parts which must be removed for replacement of the authorized parts. Parts lists are composed of functional groups in numeric sequence, with the parts in each group listed in figure and item number sequence.

*b. Section III. Special Tools List.* Not applicable.

*c. Section IV. National Stock Number and Part Number Index.* A list, in National item identification number (NIIN) sequence, of all National stock numbers (NSN) appearing in the listings, followed by a list, in alphameric sequence, of all part numbers appearing in the listings. National stock numbers and part numbers are cross-referenced to each illustration figure and item number appearance.

**3. Explanation of Columns**

*a. Illustration.* This column is divided as follows:

(1) *Figure number.* Indicates the figure number of the illustration on which the item is shown.

(2) *Item number.* The number used to identify item called out in the illustration.

*b. Source, Maintenance, and Recoverability (SMR) Codes.*

(1) *Source code.* Source codes indicate the manner of acquiring support items for maintenance, repair, or overhaul of end items. Source codes are entered in the first and second positions of the Uniform SMR Code format as follows:

<i>Code</i>	<i>Definition</i>
-------------	-------------------

PA-Item procured and stocked for anticipated or known usage.

PD-Support item, excluding support equipment, procured for initial issue or outfitting and stocked only for subsequent or additional initial issues or

<i>Code</i>	<i>Definition</i>
-------------	-------------------

outfittings. Not subject to automatic replenishment.

PE-Support equipment procured and stocked for initial issue or outfitting to specified maintenance repair activities.

XD-A support item that is not stocked. When required, item will be procured through normal supply channels.

**NOTE**

Cannibalization or salvage may be used as a source of supply for any items source coded above except those coded XA and aircraft support items as restricted by AR 700-42.

(2) *Maintenance code.* Maintenance codes are assigned to indicate the levels of maintenance authorized to USE and REPAIR support items. The maintenance codes are entered in the third and fourth positions of the Uniform SMR Code format as follows:

(a) The maintenance code entered in the third position will indicate the lowest maintenance level authorized to remove, replace, and use the support item. The maintenance code entered in the third position will indicate one of the following levels of maintenance:

<i>Code</i>	<i>Application/Explanation</i>
-------------	--------------------------------

O-Support item is removed, replaced, used at the organizational level.

F-Support item is removed, replaced, used at the direct support level.

(b) The maintenance code entered in the fourth position indicates whether the item is to be repaired and identifies the lowest maintenance level with the capability to perform complete repair (i.e., all authorized maintenance functions). This position will contain one of the following maintenance codes:

<i>Code</i>	<i>Application/Explanation</i>
-------------	--------------------------------

F-The lowest maintenance level capable of complete repair of the support item is the direct support level.

H-The lowest maintenance level capable of complete repair of the support item is the general support level.

D-The lowest maintenance level capable of complete repair of the support item is the depot level.

Z--Nonreparable. No repair is authorized.

(3) *Recoverability code.* Recoverability codes are assigned to support items to indicate the disposition action on unserviceable items. The recoverability code is entered in the fifth position of the Uniform SMR Code format as follows:

*Recoverability*

<i>codes</i>	<i>Definition</i>
--------------	-------------------

Z-Nonreparable item.	When unserviceable, condemn and dispose at the level indicated in position 3.
----------------------	---

F-Reparable item.	When uneconomically reparable, condemn and dispose at the direct support level.
-------------------	---

H-Reparable item.	When uneconomically reparable, condemn and dispose at the general support level.
-------------------	--

D-Reparable item.	When beyond lower level repair capability, return to depot. Condemnation and disposal not authorized below depot level.
-------------------	---

L-Reparable item.	Repair, condemnation, and disposal not authorized below depot/specialized repair activity level.
-------------------	--

*c. National Stock Number.* Indicates the National stock number assigned to the item and will be used for requisitioning purposes.

*d. Part Number.* Indicates the primary number used by the manufacturer (individual, company, firm, corporation, or Government activity), which controls the design and characteristics of the item by means of its engineering drawings, specifications, standards, and inspection requirements to identify an item or range of items.

**NOTE**

When a stock numbered item is requisitioned, the repair part received may have a different part number than the part being replaced.

*e. Federal Supply Code for Manufacturer (FSCM).* The FSCM is a 5-digit numeric code listed in SB 708-42 which is used to identify the manufacturer, distributor, or Government agency, etc.

*f. Description.* Indicates the Federal item name and, if required, a minimum description to identify the item.

*g. Unit of Measure (U/M).* Indicates the standard of the basic quantity of the listed item as used in performing the actual maintenance function. This measure is expressed by a two-character alphabetical abbreviation (e.g., ea, in, pr, etc). When the unit of measure differs from the unit of issue, the lowest unit of issue that will satisfy the required units of measure will be requisitioned.

*h. Quantity Incorporated in Unit.* Indicates the quantity of the item used in the breakout shown on the illustration figure, which is prepared for a functional group, subfunctional group, or an assembly.

**4. Special Information**

*a.* The following publications pertain to the AN/ ALM-153 and its components:

TM 11-4940-476-14, Electronics Shop, Semitrailer	Mounter AN/ALM-153
TM 11-5835-242-14, Recorder/Reproducer Magnetic	Tape RD-392/U
TM 11-5835-242-24P, Recorder/Reproducer Magnetic	Tape RD-392/U
TM 11-5895-829-14, Interface Unit J-3238/ALM-153	
TM 11-5895-829-24P, Interface Unit J-3238/ALM-153	
TM 11-5895-831-24, Receiving Set, Countermeasures	AN/ALQ-133
TM 11-5895-831-24P, Receiving Set, Countermeasures	AN/ALQ-133
TM 11-6625-446-15, Wattmeter AN/URM-120	
TM 11-6625-446-40P, Wattmeter AN/URM-120	
TM 11-6625-654-14, Test Set, Multimeter AN/USM -	223A
TM 11-6625-654-24P, Test Set, Multimeter AN/USM -	223A
TM 11-6625-2520-14, Signal Generator AN/URM-170	
TM 11-6625-2520-24P, Signal Generator AN/URM-170	
TM 11-6625-2520-24P-1, Signal Generator SG-944/U	
TM 11-6625-2646-14-1, Test Set, Comparator TS-	3447/ALM-153
TM 11-6625-2646-14-2, Test Set, Comparator TS-	3447/ALM-153
TM 11-6625-2646-24P, Test Set, Comparator TS-	3447/ALM-153
TM 11-6625-2647-14, Simulator Navigation SM-	699/ALM-153
TM 11-6625-2647-24P, Simulator Navigation SM-	699/ALM-153
TM 11-6625-2649-14, Panel, Maintenance Operator	Control C-9632/ALM-153
TM 11-6625-2649-24P, Panel, Maintenance Operator	Control C-9632/ALM-153
TM 11-6625-2651-14, Power Divider CU-2105/ALM-153	
TM 11-6625-2651-24P, Power Divider CU-2105/ALM-	153
TM 11-6625-2654-14, Control, Synthesizer Scan C-	9539/ALM-153
TM 11-6625-2654-24P, Control, Synthesizer Scan C -	9539/ALM-153
TM 11-6625-2656-24, Test Set, Flight Line AN/ALM-154	
TM 11-6625-2656-24P, Test Set, Flight Line AN/ALM-	154
TM 11-6625-2658-14, Oscilloscope AN/USM-281C	

TM 11-6625-2743-14, Pulse Generator DP Model 101  
 TM 11-6625-2743-24P, Pulse Generator DP Model 101  
 TM 11-6625-2760-14&P, Dual Trace Amplifier AM- 6880/U  
 TM 11-6625-2781-14&P, Spectrum Analyzer IP- 1216(P)/GR  
 TM 11-6625-2781-14-1, RF Plug-in PL-1388/U  
 TM 11-6625-2781-24P-1, RF Plug-in PL-1388/U  
 TM 11-6625-2781-14-4, RF Plug-in PL-1400/U  
 TM 11-6625-2781-24P-4, RF Plug-in PL-1400/U  
 TM 11-6625-2781-14-6, Tracking Preselector F-1414/U  
 TM 11-6625-2781-24P-6, Tracking Preselector F-1414/U  
 TM 11-6625-2808-14, Frequency Counter TD- 1225(V)1/U  
 TM 11-6625-2808-24P, Frequency Counter TD- 1225(V)1/U  
 TM 11-6625-2820-14&P, Signal Generator SC- 735/URM-165  
 TM 11-6625-2837-14-1, Signal Generator HP8660C-100 and Frequency Extension Module Model 11661B  
 TM 11-6625-2837-24P-1, Signal Generator HP8660C- 100 and Frequency Extension Module Model 11661B  
 TM 11-6625-2837-14-2, AM/FM Module Plug-in HP86632B  
 TM 11-6625-2837-24P-2, AM/FM Module Plug-in HP86632B  
 TM 11-6625-2837-14-3, AM/Pulse Module Plug-in HP86631B  
 TM 11-6625-2837-24P-3, AM/Pulse Module Plug-in HP86631B  
 TM 11-6625-2837-14-4, RF Plug-in HP86603A  
 TM 11-6625-2837-24P-4, RF Plug-in HP86603A  
 TM 11-6625-2856-14, Vector Voltmeter HP8405AR  
 TM 11-6625-2856-24P, Vector Voltmeter HP8405AR  
 TM 11-6625-2857-14, RF Power Meter Boonton Model 42BD  
 TM 11-6625-2857-24P, RF Power Meter Boonton Model 42BD  
 TM 11-6625-2909-14, Signal Generator AN/USM-48  
 TM 11-6625-2909-24P, Signal Generator AN/USM-48  
 TM 11-6625-2910-14, Signal Generator AN/USM-47  
 TM 11-6625-2910-24P, Signal Generator AN/USM-47  
 TM 11-7035-200-14, Digital Data Set AN/USQ-61  
 TM 11-7035-200-24P, Digital Data Set AN/USQ-61/N  
 TM 11-7440-269-14-1, Computer Set Digital AN/UYK - 23  
 TM 11-7440-269-14-2, Computer Set Digital AN/UYK - 23  
 TM 11-7440-269-14-3, Computer Set Digital AN/UYK-23  
 TM 11-7440-269-14-4, Computer Set Digital AN/UYK-23  
 TM 11-7440-269-14-5, Computer Set Digital AN/UYK-23  
 TM 11-7440-269-24P, Computer Set Digital AN/UYK-23

b. National Stock Numbers (NSN's) that are missing from P source coded items have been applied for and will be added to this TM by future change/revision when they are entered in the Army Master Data File (AMDF). Until the NSN's are established and published, submit exception requisitions to: Commander, US Army Communications and Electronics Materiel Readiness Command, ATTN: DRSEL-MM, Fort Monmouth, NJ 07703 for the part required to support your equipment.

## 5. How to Locate Repair Parts

. When National stock number or part number is unknown.

(1) *First.* Using the table of contents, determine the functional group within which the item belongs. This is necessary since illustrations are prepared for functional groups and listings are divided into the same groups.

(2) *Second.* Find the illustration covering the functional group to which the item belongs.

(3) *Third.* Identify the item on the illustration and note the illustration figure and item number of the item.

(4) *Fourth.* Using the Repair Parts Listing, find the figure and item number noted on the illustration.

b. When National stock number or part number is known.

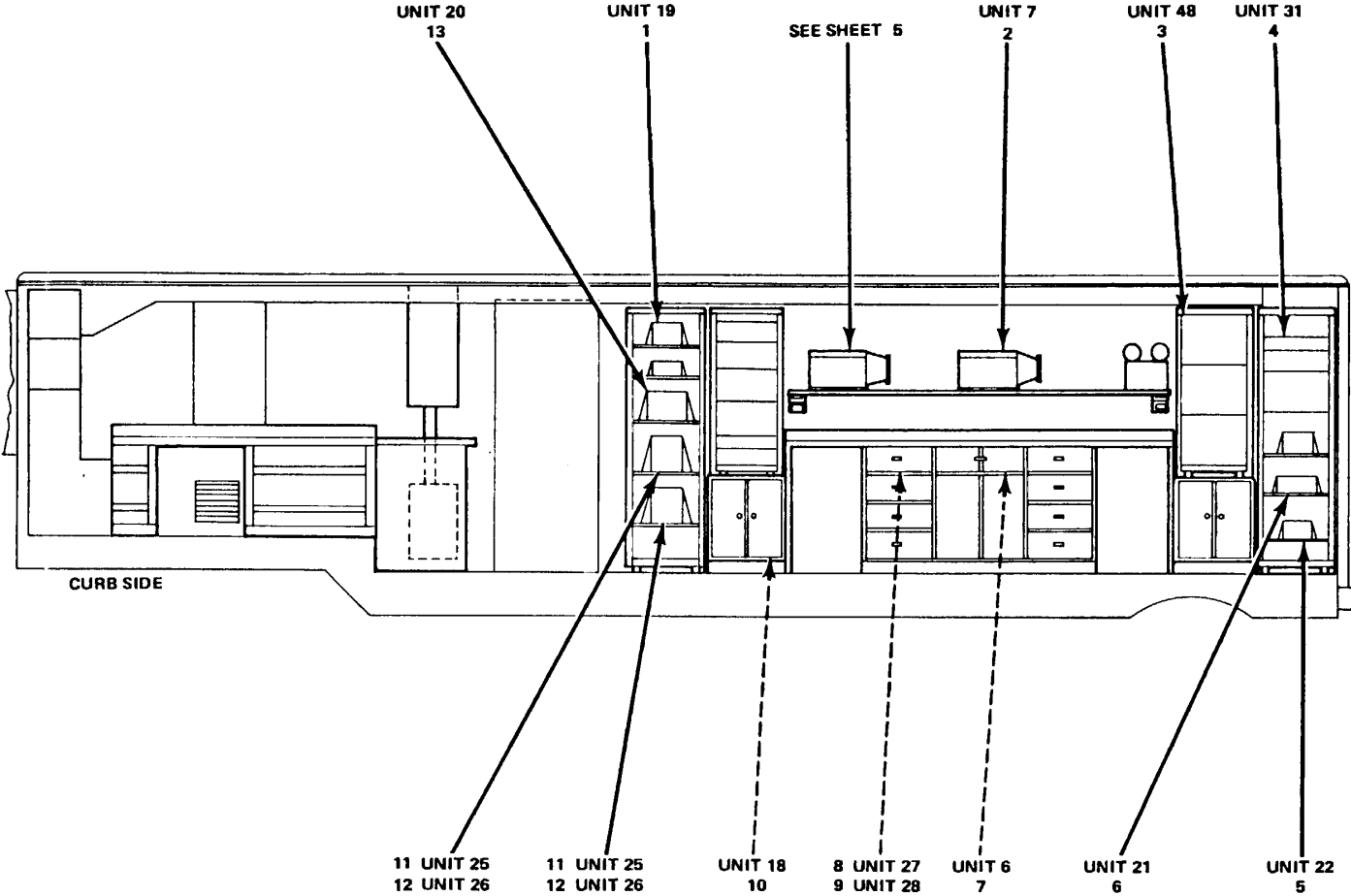
(1) *First.* Using the Index of National Stock Numbers and Part Numbers, find the pertinent National stock number or part number. This index is in NIIN sequence followed by a list of part numbers in alphanumeric sequence, cross-referenced to the illustration figure number and item number.

(2) *Second.* After finding the figure and item number, locate the figure and item number in the repair parts list.

## 6. Abbreviations

Not applicable.

(Next printed page is 4.)



EL20P001

Figure 1. Electronics Shop, Semi-trailer Mounted, AN/A LM- 153 (Sheet 1 of 5)

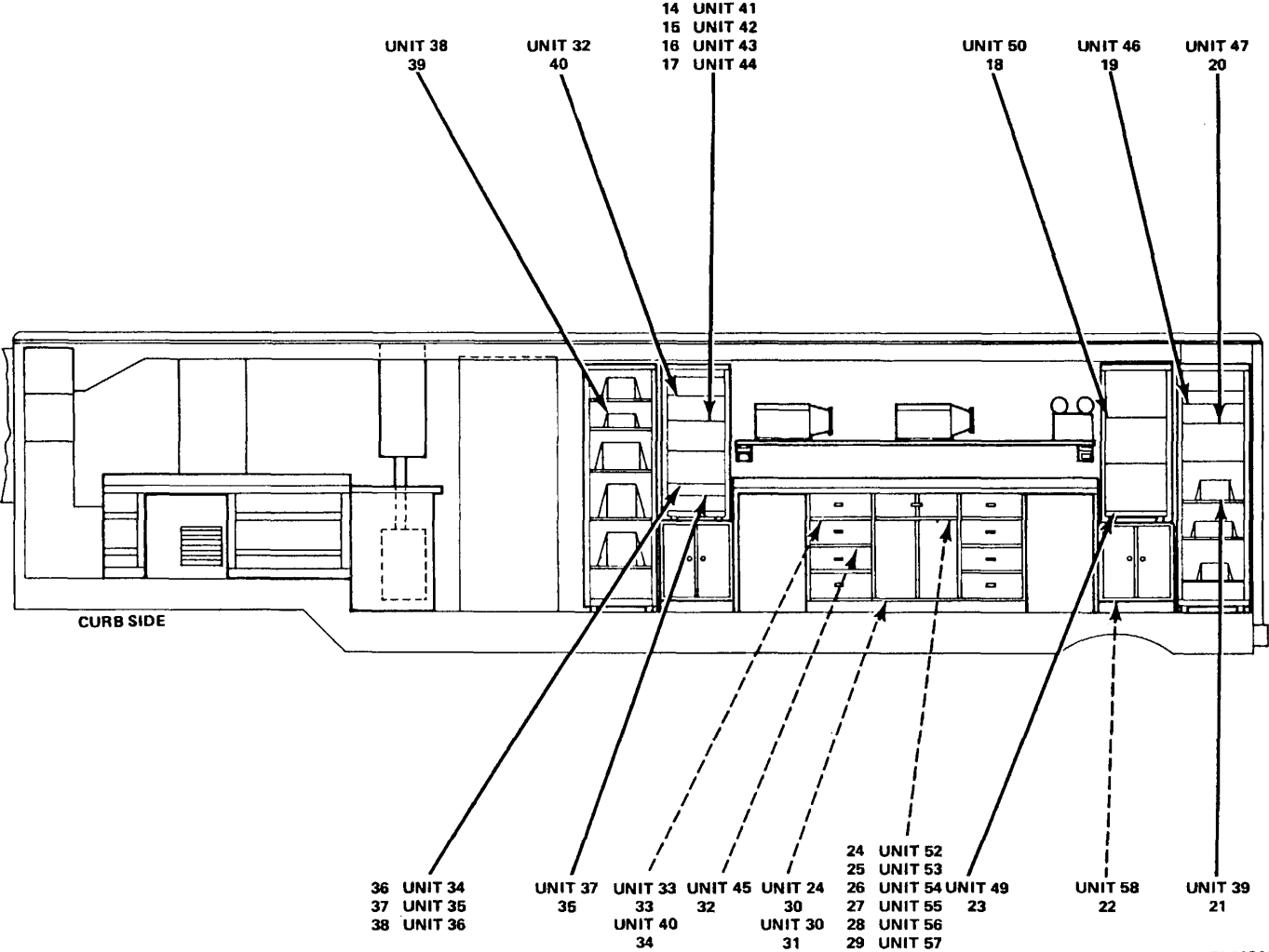


Figure 1. Electronics Shop, Semi-trailer Mounted, AN/A LM- 153 (Sheet 2 of 5)



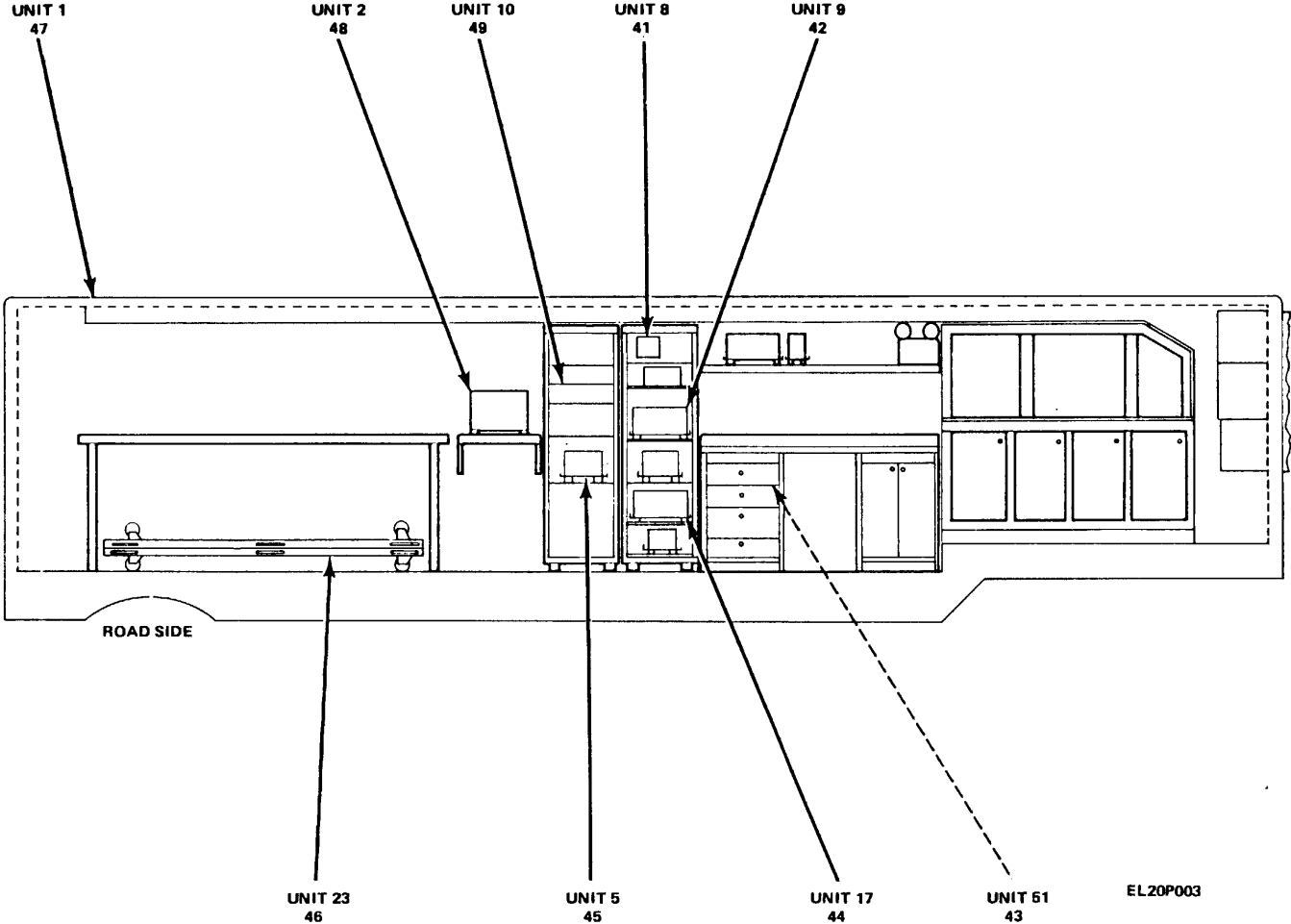


Figure 1. Electronics Shop, Semi-trailer Mounted, AN/ALM-153 (Sheet 3 of 5)

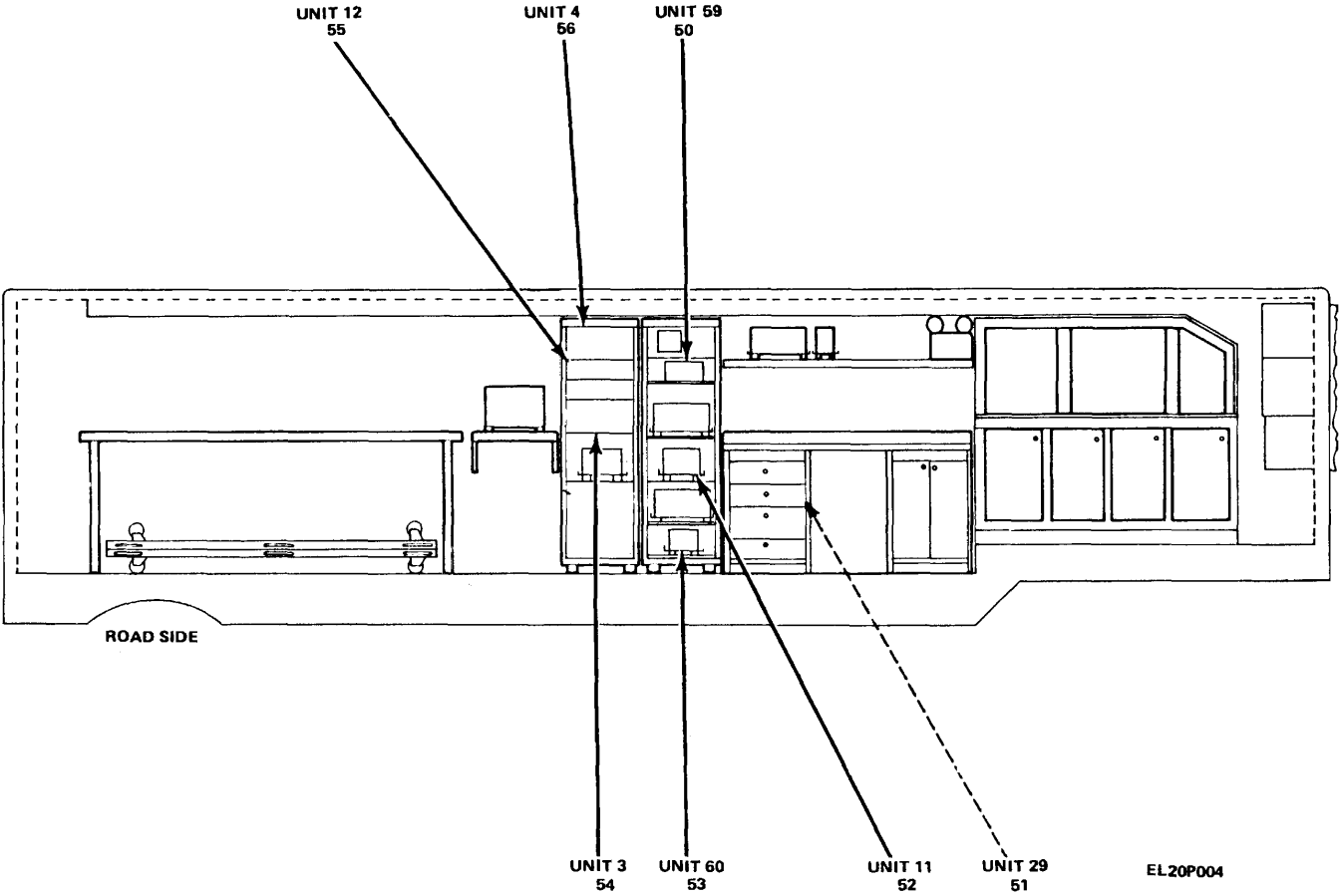
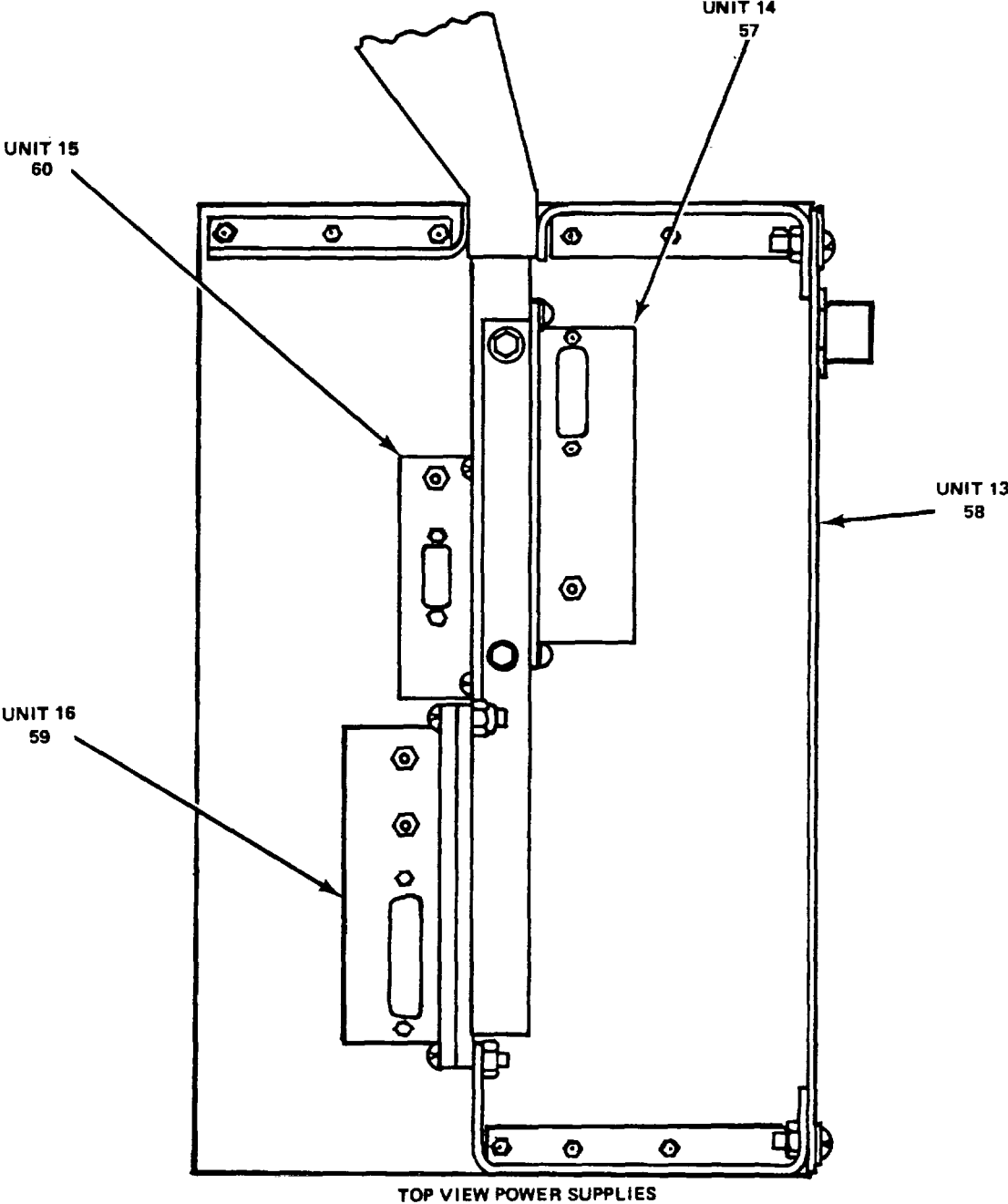


Figure 1. Electronics Shop, Semi-trailer Mounted, AN/ALM- 153 (Sheet 4 of 5)



EL20P005

Figure 1. Electronics Shop, Semi-trailer Mounted, AN/ALM- 153 (Sheet 5 of 5)

SECTION II

TM 11-4940-476-24P

(1) ILLUSTRATION		(2)	(3)	(4)	(5)	(6) DESCRIPTION	(7)	(8)
(a) FIG NO.	(b) ITEM NO.	SMR CODE	NATIONAL STOCK NUMBER	PART NUMBER	FSCM	USABLE ON CODE	U/M	QTY INC IN UNIT
						GROUP 00 ELECTRONICS SHOP,SEMI-TRAILER MOUNTED,AN/ALM-153		
1	1	PEFDD	6930-01-032-4286	SN-0-870183	80063	SIMULATOR,NAVIGATIO (SM-699/ALM-153)	EA	1
1	2	PDFDD	5865-01-024-0417	SK-D-870100	80063	CONVERTER,FREOU (CV-3174/ALQ-133)	EA	1
1	3	PEFHH		620BR	28480	GENERATOR,SIGNAL SG944/U	EA	1
1	4	PEFDD		HP5340AR001	28480	FREQUENCY COUNTER TD-1225(V)I/U	EA	1
1	5	PDFDD	5865-01-02-0391	S-D-870346	80063	CONTROL,SYNTHES I (C-9539/ALM-153)	EA	1
1	6	PDFDD	5865-01-024-0449	S-D-870817	80063	DIVIDER,POWER,RA (CU--2105AL,-153)	EA	1
1	7	PDFDD	5865-01-024-0448	S-D-870568	80063	DIVIDER,POWER,RA (CU-2104/AL0-133)	EA	1
1	8	PAFZZ		P60538	80009	PROBE	EA	8
1	9	PAFZZ	6625-00-177-1639	DA75U	81349	DUMMY LOAD,ELECTRIC	EA	1
1	10	PEFDD	6625-01-026-9914	S-D-810634	80063	TEST SET,COMPARA (TS-3447/ALM-153)	EA	1
1	11	PEFHH	6625-00-053-3112	ANUSM281C	80058	OSCILLOSCOPE	EA	2
1	12	PEFHH	6625-00-050-4873	7A18NOPTION6	80009	AMPLIFIER,DUAL A16880/U	EA	2
1	13	PEFDD	5865-01-023-6179	SM-D-870510	80063	SIMULATOR,COMPAR (SM-700/ALM-153)	EA	1
1	14	PEFHH	6625-01-042-0925	HP8660C-100	28480	MAIN FRAME	EA	1
1	15	PEFHH	6625-01-003-7413	HP11661B	28480	FREQUENCY EXTENSION	EA	1
1	16	PEFHH	6625-01-050-8799	HP86603A	28480	PLUG-IN,RADIO	EA	1
1	17	PEFHH	6625-00-005-6532	HP866318	28480	PLUG IN,AM PULSE	EA	1
1	18	PEFHH	6625-00-859-3421	628AR	28480	GENERATOR,SIGNAL ANUSM48	EA	1
1	19	PEFHH	6625-00-254-6671	8616A	28480	SIGNAL GENERATOR SGT35/UAM65	EA	1
1	20	PEFHH		618CR	28480	SIGNAL GENERATOR AN/URMITO	EA	1
1	21	PEFDD	6625-01-050-8800	42BDOPTION01AND 9	04901	TEST SET,RADIO	EA	1
1	22	PDOFF		SA87216L1	80063	CABLE ASSEMBLY SE	EA	1
1	23	PEFHH	6625-00-445-6917	626A	28480	GENERATOR,SIGNAL ANUS47	EA	1
1	24	PAFZZ	5985-00-087-2547	CNT96AU	80058	ATTENUATOR,VARIABLE	EA	1
1	25	PAFZZ	5985-00-084-4110	CNL197U	80058	ATTENUATOR,FIXED	EA	1
1	26	PAFZZ	5985-00-834-3662	0-493459	ATTEN	UATOR,FIXED CNLB98U	EA	1
1	27	PAFZZ	5985-00-615-3104	CNL199U	80058	ATTENUATOR,FIXED	EA	1
1	28	PAFZZ	5985-00-655-7589	CN1200U	80058	ATTENUATOR,FIXED	EA	1
1	29	PAFZZ	5985-00-626-4370	50-20	93459	ATTENUATOR,FIXED CN,201/U	EA	1
1	30	PEFHH	6625-00-167-1144	ANUSM223A	80058	TEST SET,MULTIMETER (AN/USM-223A)	EA	1
1	31	PEFHH	6625-00-813-8430	ANURN120	80058	WATTMETER	EA	1
1	32	PEFHH		NP866328	28480	PLUG IN,AM FM	EA	1
1	33	PEFZZ	6625-00-197-8443	11570A	28480	ACCESSORY KIT	EA	1
1	34	PEFDD	6625-01-026-8402	41-4E	04901	WATTMETER	EA	1
1	35	PEFDD	6625-00-253-4833	64458	28480	TRACKING F1414/U	EA	1
1	36	PEFDD	6625-00-003-8544	HPL41T	28480	ANALYZER,SPECTRU IP-1216(P)/GR	EA	1
1	37	PEFDD		HP8555AR	28480	SPECTRUM ANALYZE PL1400/U	EA	1
					<b>5</b>			

## SECTION II

TM 11-4940-476-24P

(1) ILLUSTRATION		(2)	(3)	(4)	(5)	(6) DESCRIPTION	(7)	(8)
(a) FIG NO.	(b) ITEM NO.	SMR CODE	NATIONAL STOCK NUMBER	PART NUMBER	FSCM	USABLE ON CODE	U/M	QTY INC IN UNIT
1	38	PEFDD	6625-00-431-9339	85528	28480	SPECTRUM ANALYZER PL1388/U.....	EA	1
1	39	PEFDD	6625-00-454-0708	37000-424	15933	PULSE GENERATOR (DP-101).....	EA	1
1	40	PEFDD	6625-00-921-1897	HP8405AR	28480	VECTOR VOLTMETER.....	EA	1
1	41	PDFDD	5865-01-024-3897	SM-D-870364	80063	CONTROL, INDICATOR (C-9538/ALQ-133) ...	EA	1
1	42	PDFDD	5865-01-024-3845	SM-D-870553	80063	MONITOR-CONTROLLER C9537/ALQ-133 ..	EA	1
1	43	PAOZZ		88507	80058	BATTERY.....	EA	1
1	44	PDFDD	5865-01-024-3883	SM-D-870408	80063	POWER SUPPLY (PP-7036/USQ-61) .....	EA	1
1	45	PDFDD	5865-01-024-0450	SM-D-870072	80063	DIVIDER,POWER,RA (0-1672/ALQ-133) .....	EA	1
1	46	PDFDD	5865-01-024-0388	SM-D-871060	80063	DOLLY,RECEIVER G.....	EA	2
1	47	PDFDD		V477USM	80058	SEMITRAILE .....	EA	1
1	48	PDFDD	7025-00-214-0895	MODEL 2000	80249	TERMINAL,COMPUTER C.....	EA	1
1	49	PDFDD	5865-01-020-0387	SM-D-870774	80063	CONTROL PANEL,MA (C-9632/ALM-153) ....	EA	1
1	50	PDFDD	7035-01-024-0953	SM-D-870529	80063	MODEM,DIGITAL (MD-939/USQ-61).....	EA	1
1	51	PEFHH		245	51692	MULTIMETER,DIGITAL ME-496/U.....	EA	4
1	52	PDFDD	7035-01-041-3437	7101616-01	90536	COMPUTER SET,DIGITA (AN/IUYK-23).....	EA	1
1	53	PDFDD	7035-01-024-7913	SM-D-872208	80063	POWER SUPPLY (PP-7035/ALQ-133) .....	EA	1
1	54	PDFDD	5865-01-031-4052	SM-D-870768	80063	RECORDER-REPRODU (RD-392/U).....	EA	1
1	55	PDFDD	6625-01-062-3110	7101616-01	90536	PANEL MAINTENANCE (C-9633/UYP-23) ....	EA	1
1	56	PDFDD	5865-01-024-0390	SM-D-870830	80063	INTERFACE UNIT (J-3238/ALM-153) .....	EA	1
1	57	PAFDL		7015-14	24429	POWER SUPPLY.....	EA	1
1	58	PDFDD	5865-01-024-0429	SM-D-870394	80063	CONTROL,POWER SU (C-9536/ALQ-133) ...	EA	1
1	59	PAFDL		8D362A	24429	POWER SUPPLY.....	EA	1
1	60	PAFDL	6130-00-165-2213	ZC15-7	24429	POWER SUPPLY.....	EA	1
					<b>6</b>			

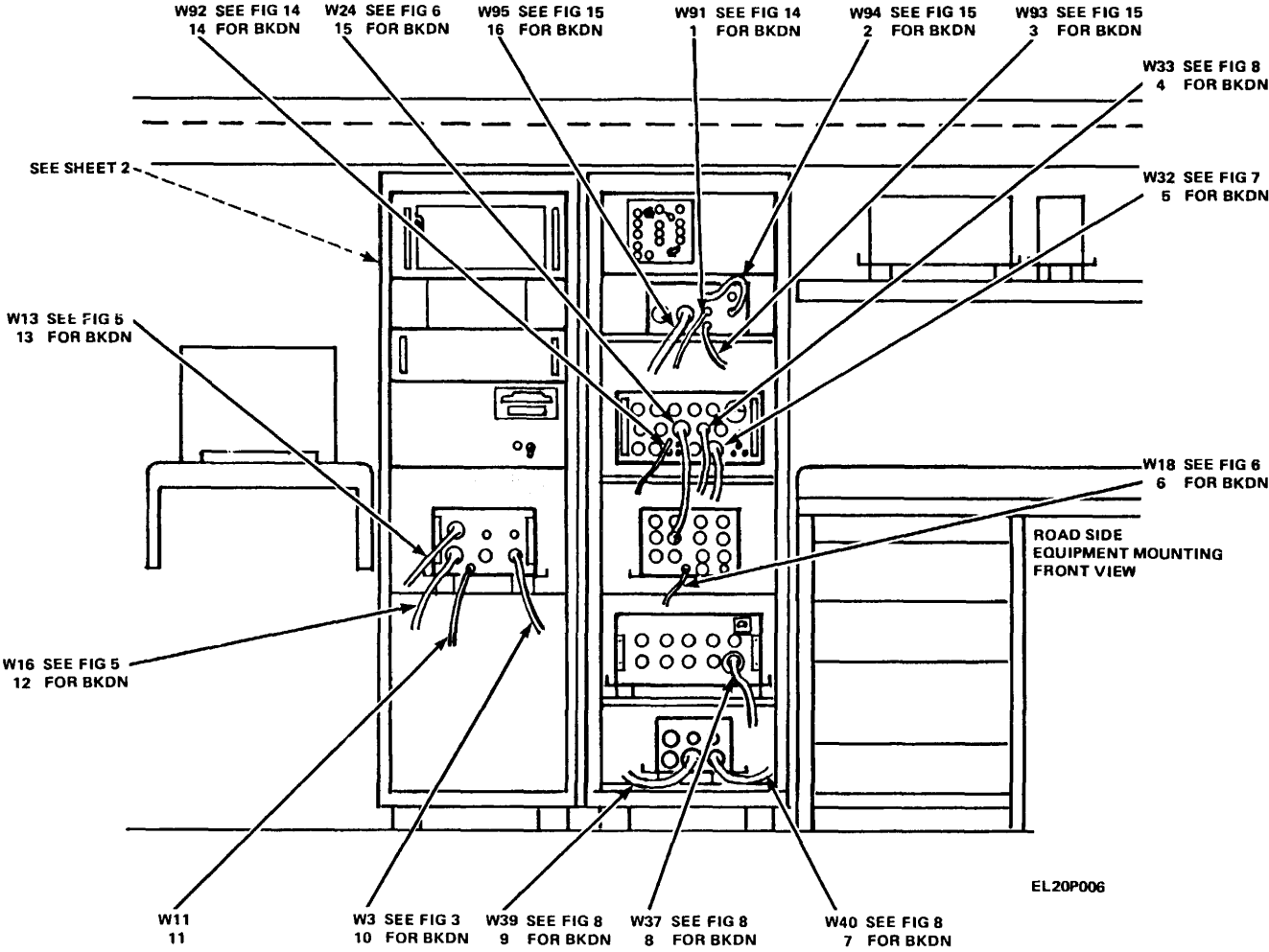


Figure 2. Interconnect Cable Group (Sheet 1 of 4)

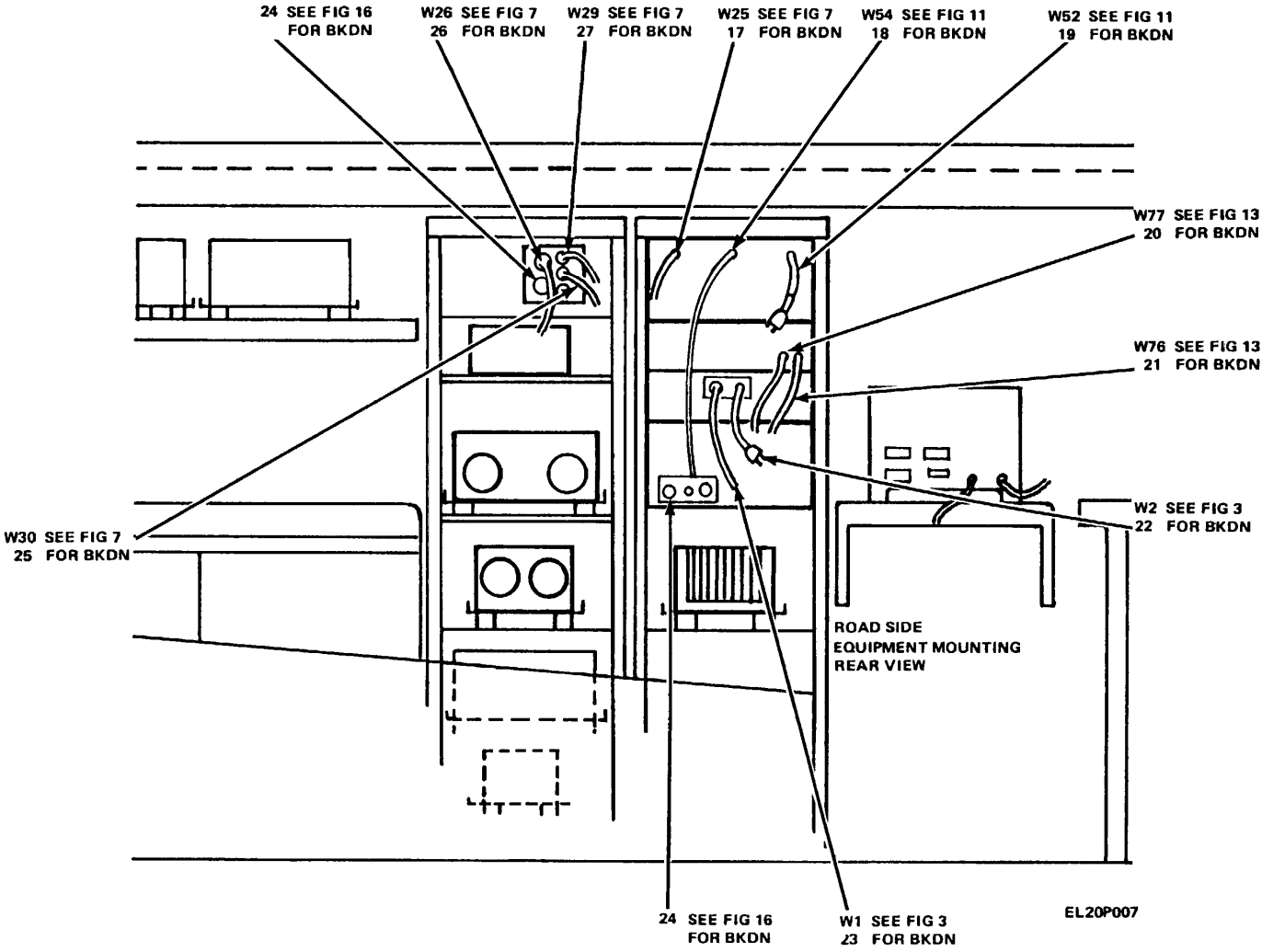


Figure 2 Interconnect Cable Group (Sheet 2 of 4)

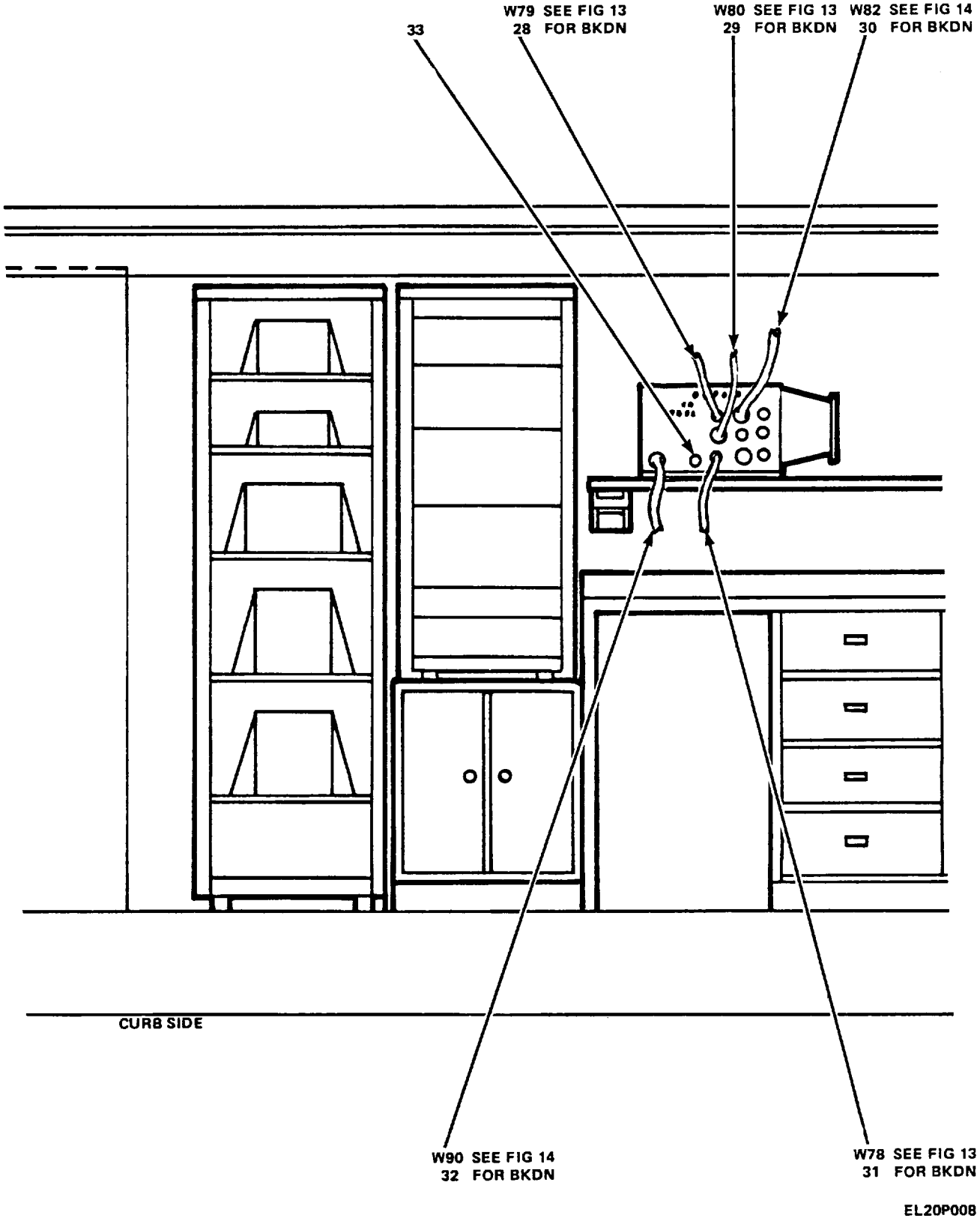


Figure 2. Interconnect Cable Group (Sheet 3 of 4)



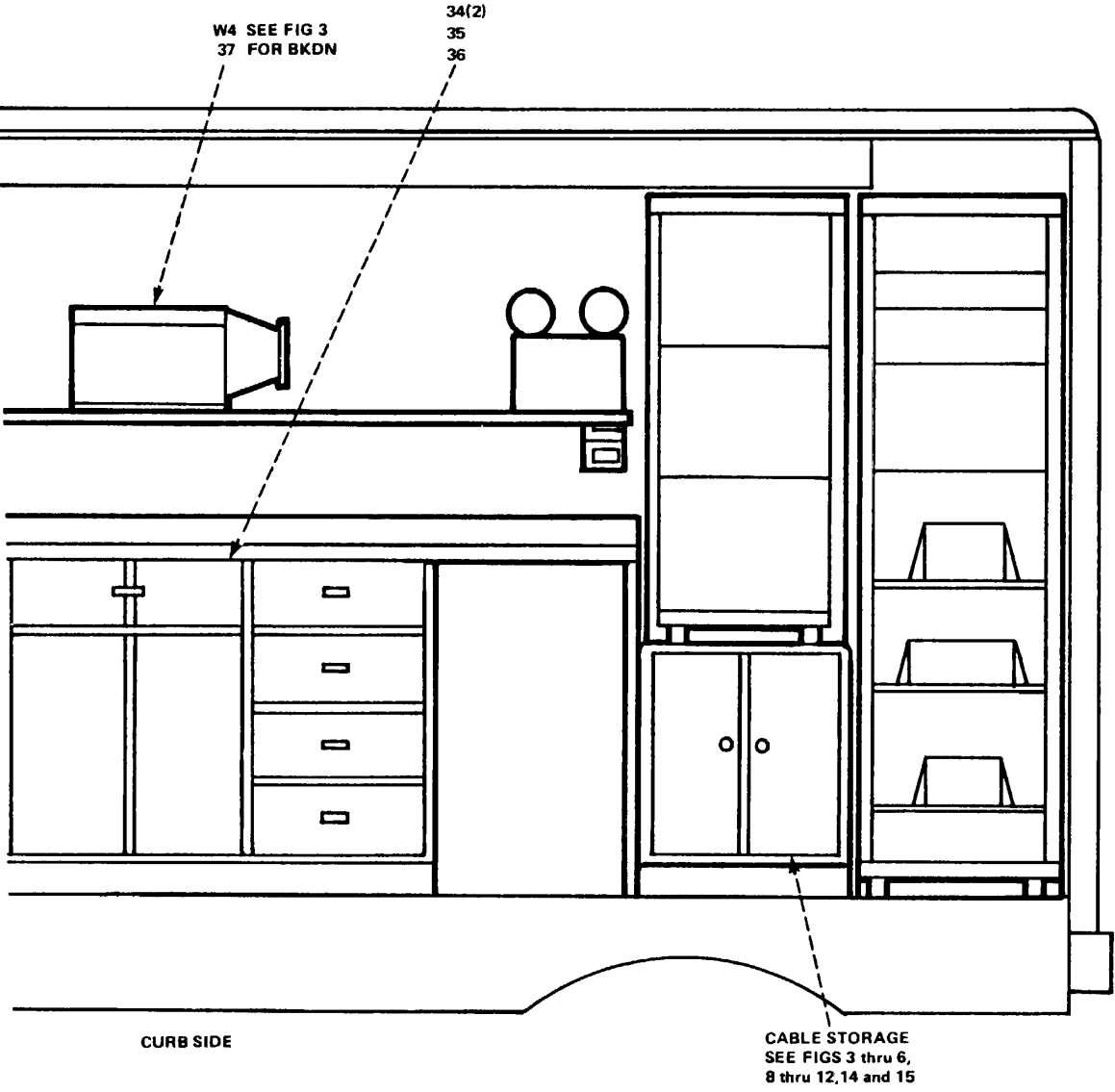
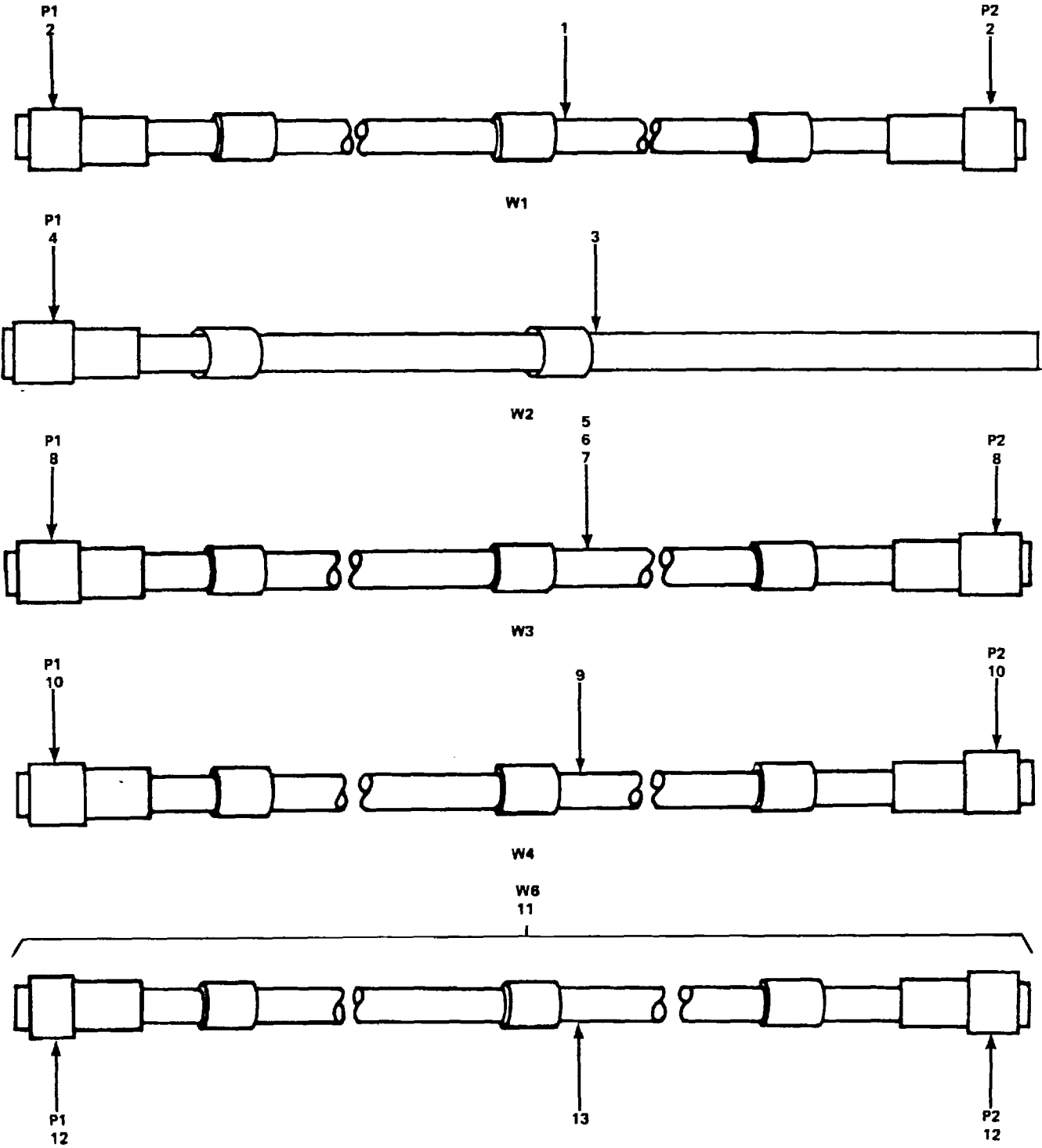


Figure 2. Interconnect Cable Group (Sheet 4 of 4)

SECTION II

TM 11-4940-476-24P

(1) ILLUSTRATION		(2)	(3)	(4)	(5)	(6)	(7)	(8)
(a) FIG NO.	(b) ITEM NO.	SMR CODE	NATIONAL STOCK NUMBER	PART NUMBER	FSCM	DESCRIPTION  USABLE ON CODE	U/M	QTY INC IN UNIT
						GROUP 58 INTERCONNECT CABLE GROUP, UNIT 58		
2	1	PAOFF		SMA871422	80063	CABLE ASSEMBL.....	EA	1
2	2	PAOFF		SMA871425	80063	CABLE ASSEMBL.....	EA	1
2	3	PAOFF		SMA871424	80063	CABLE ASSEMBL.....	EA	1
2	4	PAOFF		SMA871383	80063	CABLE ASSEMBL.....	EA	1
2	5	PAOFF		SMA871382	80063	CABLE ASSEMBL.....	EA	1
2	6	PAOFF		SMA871376	80063	CABLE- ASSEMBL.....	EA	1
2	7	PAOFF		SMA871407	80063	CABLE ASSEMBLY.....	EA	1
2	8	PAOFF		SMA871384	80063	CABLE ASSEMBL.....	EA	1
2	9	PAOFF		SMA871949	80063	CABLE ASSEMBL.....	EA	1
2	10	PAOFF		SMA872020	80063	CABLE ASSEMBL.....	EA	1
2	11	PAOZZ		SMA871373	80063	CABLE ASSEMBL.....	EA	1
2	12	PAOFF		SMA871315	80063	CABLE ASSEMBL.....	EA	1
2	13	PAOFF		SMA871374	80063	CABLE ASSEMBL.....	EA	1
2	14	PAOFF		SMA871423	80063	CABLE ASSEMBL.....	EA	1
2	15	PAOFF		SMA871395	80063	CABLE ASSEMBL.....	EA	1
2	16	PAOFF		SMA871426	80063	CABLE ASSEMBL.....	EA	1
2	17	PAOFF		SMA871378	80063	CABLE ASSEMBL.....	EA	1
2	18	PAOFF		SMA871465	80063	CABLE ASSEMBL.....	EA	1
2	19	PAOFF		SMA871385	80063	CABLE ASSEMBL.....	EA	1
2	20	PAOFF		SMA870839	80063	CABLE ASSEMBL.....	EA	1
2	21	PAOFF		SMA870833	80063	CABLE ASSEMBL.....	EA	2
2	22	PAOFF		SMA871136	80063	CABLE ASSEMBL.....	EA	1
2	23	PAOFF		SMA871427	80063	CABLE ASSEMBL.....	EA	1
2	24	PAOFF	5999-01-054-6483	SM-C-871456	80063	CAP,ELECTRICAL.....	EA	2
2	25	PAOFF		SMA871381	80063	CABLE ASSEMBLY,POWE.....	EA	1
2	26	PAOFF		SMA871379	80063	CABLE ASSEMBL.....	EA	1
2	27	PAOFF		SMC873005	80063	CABLE ASSEMBL.....	EA	1
2	28	PAOFF		SMA871390	80063	CABLE ASSEMBLY POWE.....	EA	1
2	29	PAOFF		SMA871391	80063	CABLE ASSEMBLY POWE.....	EA	1
2	30	PAOFF		SMA871392	80063	CABLE ASSEMBL.....	EA	1
2	31	PAOFF		SMA871389	80063	CABLE ASSEMBLY POWE.....	EA	1
2	32	PAOFF		SMA871393	80063	CABLE ASSEMBL.....	EA	1
2	33	PAFZZ		SMA872915	80063	TERMINATION.....	EA	1
2	34	PAFZZ		20020PSF	16179	ADAPTER,CONNECTOR.....	EA	2
2	35	PAFZZ		SMA872019	80063	TERMINATION.....	EA	1
2	36	PAFZZ		SMC871480	80063	TERMINATION.....	EA	1
2	37	PAOFF		SMA871372	80063	CABLE ASSEMBL.....	EA	1
					<b>11</b>			



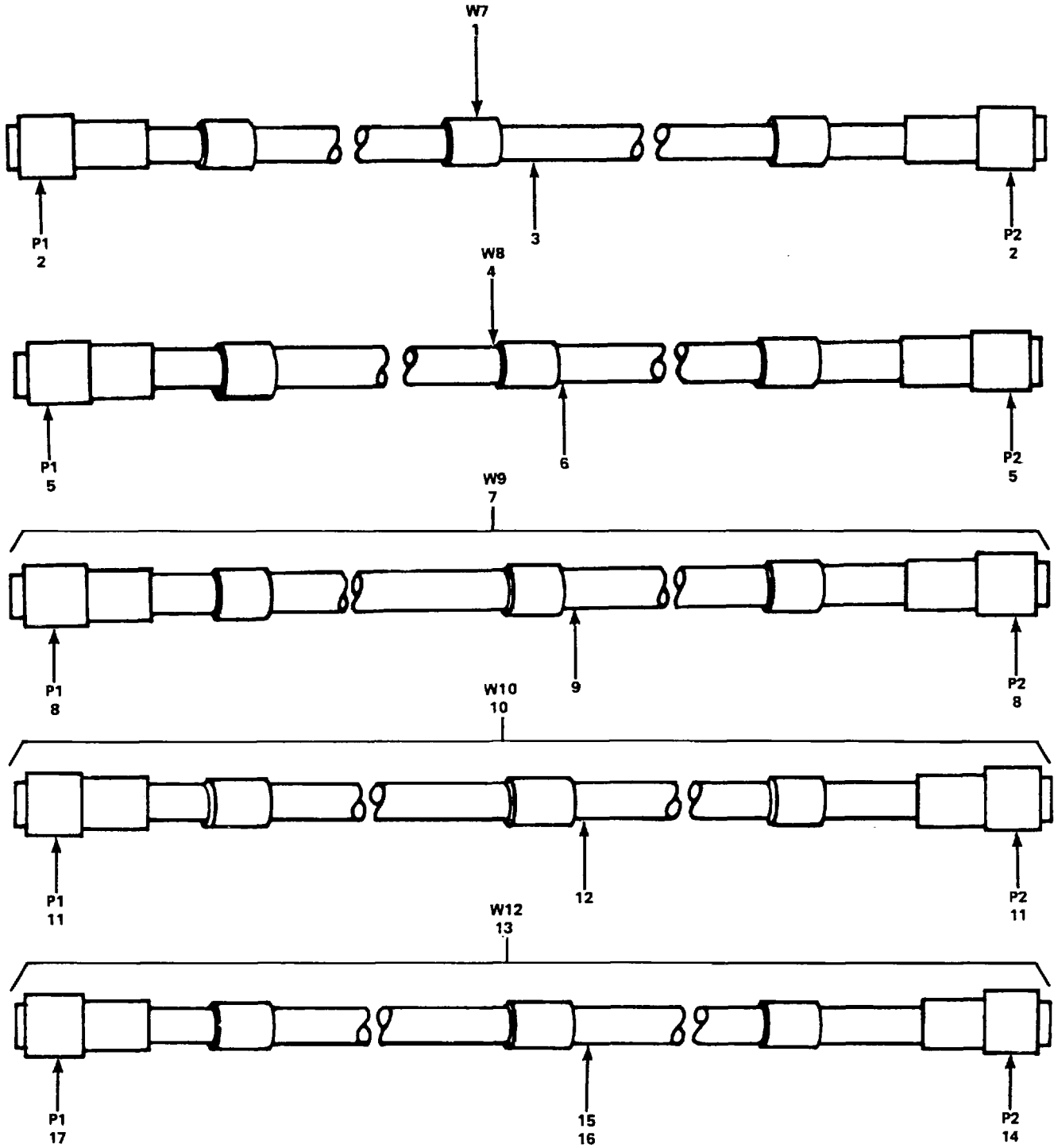
EL20P010

Figure 3. Cable Assemblies, W1 thru W4 and W6

SECTION II

TM 11-4940-476-24P

(1) ILLUSTRATION		(2)	(3)	(4)	(5)	(6) DESCRIPTION	(7)	(8)
(a) FIG NO.	(b) ITEM NO.	SMR CODE	NATIONAL STOCK NUMBER	PART NUMBER	FSCM	USABLE ON CODE	U/M	QTY INC IN UNIT
3	1	XDFZZ		A2010-01-02	90484	CABLE,SPECIAL.....	FT	140
3	2	PAFZZ		MS27467E19B35P	96906	CONNECTOR,PLU.....	EA	2
3	3	PAFZZ	6150-00-071-1180	17419	70903	CABLE ASSEMBLY,POWE .....	EA	1
3	4	PAFZZ	5935-01-053-4011	MS27467E19B11S	96906	CONNECTOR,PLUG,ELEC .....	EA	1
3	5	XDFZZ		A2010-01-02	90484	CABLE,SPECIAL.....	FT	60
3	6	XDFZZ		A2010-01	90484	WIRE,ELECTRICAL.....	FT	84
3	7	XDFZZ		A2012-02	90484	WIRE,ELECTRCAL .....	FT	1
3	8	PAFZZ		MS27467E138355	96906	CONNECTOR,PLU.....	EA	2
3	9	PAFZZ	6145-00-823-2544	RG6142BU	81349	CABLE,RADIO .....	FT	11
3	10	PAFZZ		M39012-55-4009	81349	CONNECTOR,PLU.....	EA	2
3	11	PAOFF		SMA871394	80063	CABLE ASSEMBL.....	EA	1
3	12	PAFZZ	5935-00-811-7526	51-107-0000	98291	CONNECTOR,PLUG,ELEC .....	EA	2
3	13	PAFZZ	6145-00-812-8832	RG195AU	81349	CABLE,RADIO FREQUEN.....	FT	4
					<b>13</b>			



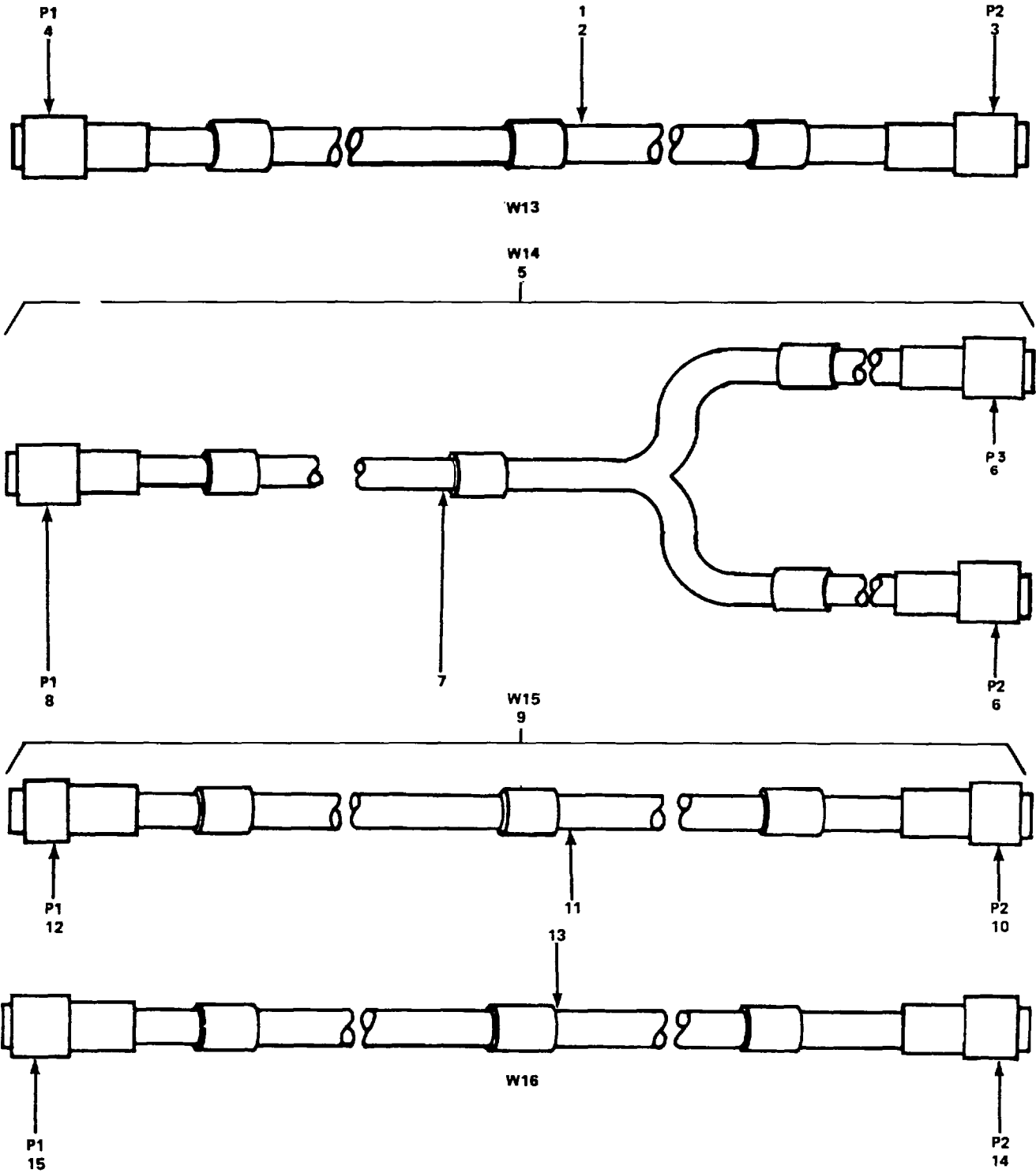
EL20P011

Figure 4. Cable Assemblies, W7 thru W10 and W12

SECTION II

TM 11-4940-476-24P

(1) ILLUSTRATION		(2)	(3)	(4)	(5)	(6) DESCRIPTION	(7)	(8)
(a) FIG NO.	(b) ITEM NO.	SMR CODE	NATIONAL STOCK NUMBER	PART NUMBER	FSCM	USABLE ON CODE	U/M	QTY INC IN UNIT
4	1	PAOFF		SMA871395	80063	CABLE ASSEMBL.....	EA	1
4	2	PAFZZ	5935-00-811-7526	51-107-0000	98291	CONNECTOR,PLUG,ELEC.....	EA	2
4	3	PAFZZ		MILC17RG1950	81349	CABLE,RADIO.....	FT	4
4	4	PAOFF		SMA871396	80063	CABLE ASSEMBL.....	EA	1
4	5	PAFZZ		51-0007-0000	98291	CONNECTOR,PLU.....	EA	2
4	6	PAFZZ	6145-00-918-5494	RG316/U	81349	CABLE,RADIO.....	FT	4
4	7	PAOFF		SMA871397	80063	CABLE ASSEMBL.....	EA	1
4	8	PAFZZ		51-0007-0000	98291	CONNECTOR,PLU.....	EA	2
4	9	PAFZZ		MILC17RG3160	81349	CABLE,RADIO.....	FT	4
4	10	PAOFF		SMA871398	80063	CABLE ASSEMBL.....	EA	1
4	11	PAFZZ		51-0007-0000	98291	CONNECTOR,PLU.....	EA	2
4	12	PAFZZ		MILC17RG3160	81349	CABLE,RADIO.....	FT	4
4	13	PAOFF		SMA871943	80063	CABLE ASSEMBL.....	EA	1
4	14	PAFZZ		MS27467E15897S	96906	CONNECTOR,PLU.....	EA	1
4	15	XDFZZ		A2012-01	90484	WIRE,ELECTRICAL.....	FT	18
4	16	XDFZZ		A2016-01	90484	WIRE,ELECTRICAL.....	FT	18
4	17	PAFZZ		MS27467E15897P	96906	CONNECTOR,PLU.....	EA	1
					<b>15</b>			



EL20P012

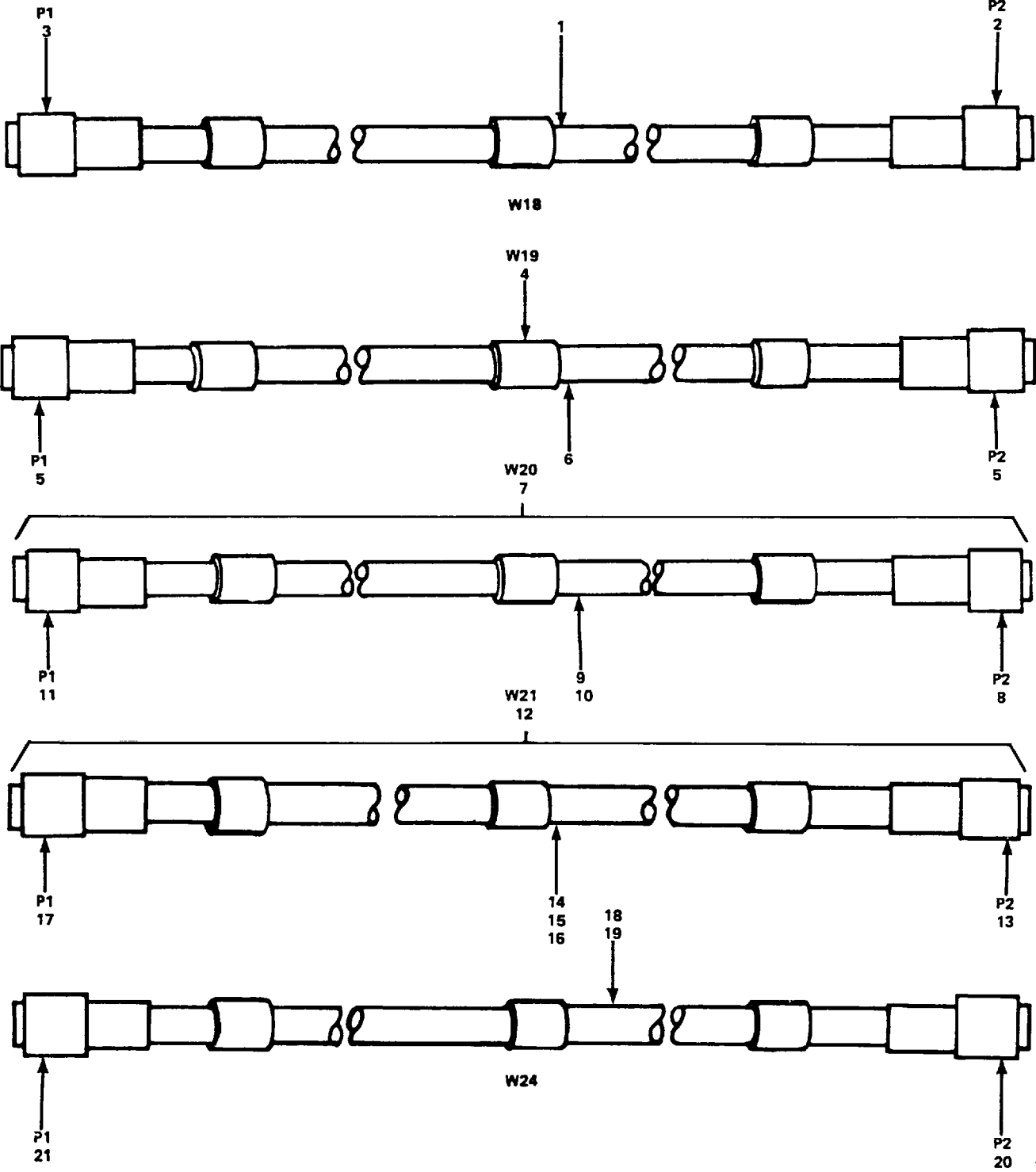
Figure 5. Cable Assemblies, W13 thru W16

SECTION II

TM 11-4940-476-24P

(1) ILLUSTRATION		(2)	(3)	(4)	(5)	(6) DESCRIPTION	(7)	(8)
(a) FIG NO.	(b) ITEM NO.	SMR CODE	NATIONAL STOCK NUMBER	PART NUMBER	FSCM	USABLE ON CODE	U/M	QTY INC IN UNIT
5	1	XDFZZ		A2010-01-02	90484	CABLE,SPECIAL.....	FT	130
5	2	XDFZZ		A2010-O1	90484	WIRE,ELECTRICAL .....	FT	15
5	3	PAFZZ	5935-01-039-6673	MS27467E17835S	96906	CONNECTOR,PLUG,ELEC .....	EA	1
5	4	PAFZZ	5935-00-038-6319	MS21467E17835P	96906	CONNECTOR,PLUG,ELEC .....	EA	1
5	5	PAOFF		SMA871400	80063	CABLE ASSEMBL.....	EA	1
5	6	PAFZZ	5935-01-031-4875	MS27467E17826P	96906	CONNECTOR,PLUG,ELEC .....	EA	2
5	7	XDFZZ		A2010-01-02	90484	CABLE,SPECIAL.....	FT	108
5	8	PAFZZ	5935-00-051-8167	MS27467E19835SB	96906	CONNECTOR,PLUG,ELEC .....	EA	1
5	9	PAOFF		SMA871401	80063	CABLE ASSEMBL.....	EA	1
5	10	PAFZZ		MS27467E21B16P	96906	CONNECTOR,PLU.....	EA	1
5	11	PAFZZ	6625-00-167-1144	SM-D-551651	80063	WIRE ELECTRICAL .....	FT	56
5	12	PAFZZ		MS27467E21B16P	96906	CONNECTOR,PLU.....	EA	1
5	13	XDFZZ		A2016-01	90484	WIRE,ELECTRICAL .....	FT	160
5	14	PAFZZ		MS27467E21B16S	96906	CONNECTOR,PLU.....	EA	1
5	15	PAFZZ		MS27467E21B16P	96906	CONNECTOR,PLU.....	EA	1
					<b>17</b>			





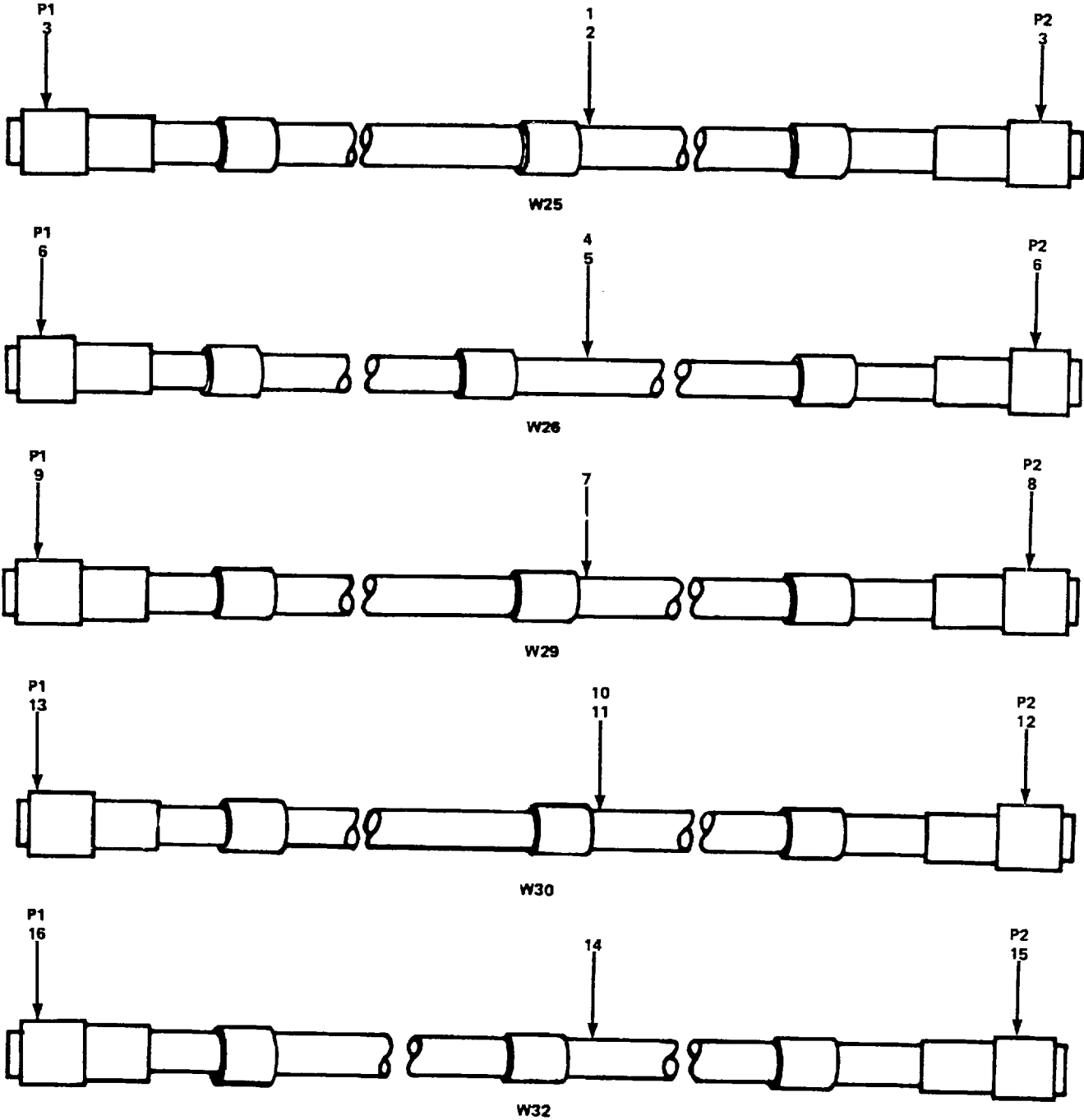
EL20P013

Figure 6. Cable Assemblies, W18 thru W21 and W24

SECTION II

TM 11-4940-476-24P

(1) ILLUSTRATION		(2)	(3)	(4)	(5)	(6) DESCRIPTION	(7)	(8)
(a) FIG NO.	(b) ITEM NO.	SMR CODE	NATIONAL STOCK NUMBER	PART NUMBER	FSCM	USABLE ON CODE	U/M	QTY INC IN UNIT
6	1	XDFZZ		A2016-01	90484	WIRE,ELECTRICAL .....	FT	64
6	2	PAFZZ	5935-01-016-8597	M81511-26ED03S1	81349	CONNECTOR,PLUG,ELEC .....	EA	1
6	3	PAFZZ		MS27467E17B8P	96906	CONNECTOR,PLUG,ELEC .....	EA	1
6	4	PAOFF		SMA871722	80063	CABLE ASSEMBL.....	EA	1
6	5	PAFZZ	5935-01-013-0987	MB1511-06EF01S1	81349	CONNECTOR,PLUG,ELEC .....	EA	2
6	6	XDFZZ		A2010-02-01	90484	CABLE,SPECIAL.....	FT	120
6	7	PAOFF		SMA871721	80063	CABLE ASSEMBL.....	EA	1
6	8	PAFZZ	5935-00-011-0426	M81511-06EF01P4	81349	CONNECTOR,PLUG,ELEC .....	EA	1
6	9	XDFZZ		A2010-02	90484	WIRE ELECTRICAL .....	FT	1
6	10	XDFZZ		A2010-01-02	90484	CABLE,SPECIAL.....	FT	126
6	11	PAFZZ	5935-00-189-3213	M81511-06EF01P3	81349	CONNECTOR,PLUG,ELEC .....	EA	1
6	12	PAOFF		SMA871843	80063	CABLE ASSEMBL.....	EA	1
6	13	PAFZZ	5935-00-087-0426	M81511-06EF01P4	81349	CONNECTOR,PLUG,ELEC .....	EA	1
6	14	XDFZZ		A2010-01-02	90484	CABLE,SPECIAL.....	FT	126
6	15	XDFZZ		A2010-01	90484	WIRE,ELECTRICAL .....	FT	6
6	16	XDFZZ		A2010-02	90484	WIRE,ELECTRICAL .....	FT	6
6	17	PAFZZ	5935-00-189-3213	M81511-06EF01P3	81349	CONNECTOR,PLUG,ELEC .....	EA	1
6	18	XDFZZ		A2010-01-02	90484	CABLE,SPECIAL.....	FT	210
6	19	XDFZZ		A2010-01	90484	WIRE,ELECTRICAL .....	FT	5
6	20	PAFZZ	5935-01-013 0987	M81511-06EF01S1	81349	CONNECTOR,PLUG,ELEC .....	EA	1
6	21	PAFZZ	5935-01-009-0208	MS27467E23835P	96906	CONNECTOR,PLUG,ELEC .....	EA	1
					<b>19</b>			



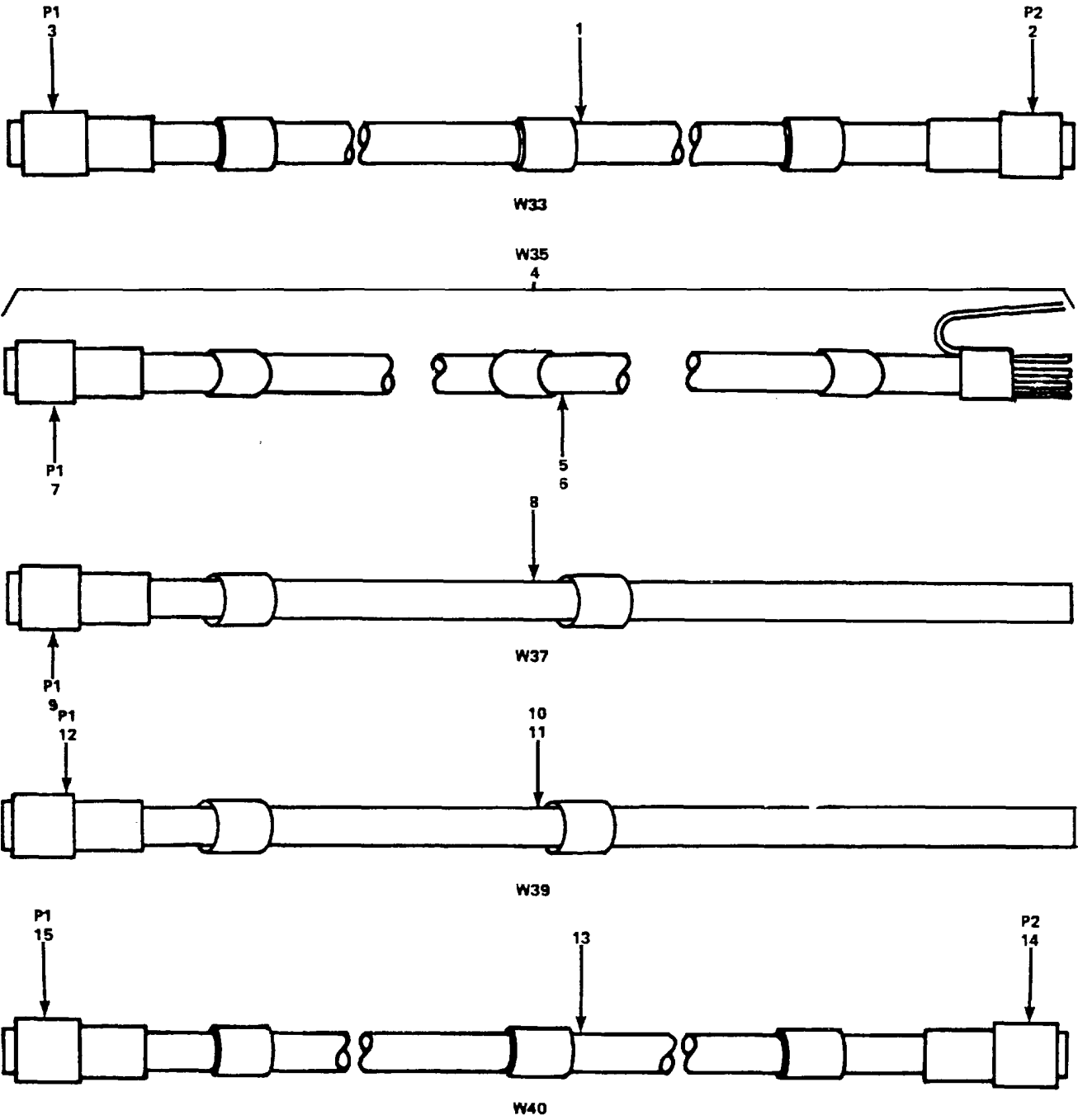
EL20P014

Figure 7. Cable Assemblies, W25, W26, W29, W30 and W32

SECTION II

TM 11-4940-476-24P

(1) ILLUSTRATION		(2)	(3)	(4)	(5)	(6) DESCRIPTION	(7)	(8)
(a) FIG NO.	(b) ITEM NO.	SMR CODE	NATIONAL STOCK NUMBER	PART NUMBER	FSCM	USABLE ON CODE	U/M	QTY INC IN UNIT
7	1	XDFZZ		A2010-01-02	90484	CABLE,SPECIAL.....	FT	208
7	2	XDFZZ		A2010-01	90484	WIRE,ELECTRICAL .....	FT	24
7	3	PAFZZ	5935-00-038-6319	MS27467E17835P	96906	CONNECTOR,PLUG,ELEC .....	EA	2
7	4	XDFZZ		A2010-01-02	90484	CABLE,SPECIAL.....	FT	208
7	5	XDFZZ		A2010-01	90484	WIRE,ELECTRICAL .....	FT	24
7	6	PAFZZ	5935-00-038-6319	MS27467E17835P	96906	CONNECTOR,PLUG,ELEC .....	EA	2
7	7	XDFZZ		A2012-01	90480	WIRE,ELECTRICAL .....	FT	60
7	8	PAFZZ	5935-01-030-2813	MS27467E11898S	96906	CONNECTOR,PLUG,ELEC .....	EA	1
7	9	PAFZZ	5935-00-006-0121	MS27467E11898P	96906	CONNECTOR,PLUG,ELEC .....	EA	1
7	10	XDFZZ		A2012-01	90484	WIRE,ELECTRICAL .....	FT	64
7	11	XDFZZ		A2016-01	90484	WIRE,ELECTRICAL .....	FT	32
7	12	PAFZZ		MS27467E15897S	96906	CONNECTOR,PLU.....	EA	1
7	13	PAFZZ		MS27467E15897P	96906	CONNECTOR,PLU.....	EA	1
7	14	XDFZZ		A2016-01	90484	WIRE,ELECTRICAL .....	FT	174
7	15	PAFZZ	5935-00-470-4192	MS27467E25829P	96906	CONNECTOR,PLUG,ELEC .....	EA	1
7	16	PAFZZ	5935-00-470-4190	MS27467E25829S	96906	CONNECTOR,PLUG,ELEC .....	EA	1
					<b>21</b>			



EL20P015

Figure 8. Cable Assemblies, W33, W35, W37, W39 and W40

SECTION II

TM 11-4940-476-24P

(1) ILLUSTRATION		(2)	(3)	(4)	(5)	(6) DESCRIPTION	(7)	(8)
(a) FIG NO.	(b) ITEM NO.	SMR CODE	NATIONAL STOCK NUMBER	PART NUMBER	FSCM	USABLE ON CODE	U/M	QTY INC IN UNIT
8	1	XDFZZ		A2016-01	90484	WIRE,ELECTRICAL .....	FT	66
8	2	PAFZZ	5935-01-053-4011	MS27467E19811S	96906	CONNECTOR,PLUG,ELEC .....	EA	1
8	3	PAFZZ		MS2746E19811P	96906	CONNECTOR,PLU.....	EA	1
8	4	PAOFF		SNA871405	80063	CABLE ASSEMBL .....	EA	1
8	5	XDFZZ		A2012-02	90484	WIRE,ELECTRICAL .....	FT	1
8	6	XDFZZ		A2012-01	90484	WIRE,ELECTRICAL .....	FT	48
8	7	PAFZZ	5935-01-016-8597	MB1511-26ED03S1	81349	CONNECTOR,PLUG,ELEC .....	EA	1
8	8	XDFZZ		A2016-01	90484	WIRE,ELECTRICAL .....	FT	130
8	9	PAFZZ		MS27467E21B16SB	96906	CONNECTOR,PLU.....	EA	1
8	10	XDFZZ		A2012-01	90484	WIRE,ELECTRIC .....	FT	1
8	11	XDFZZ		A2016-01	90484	WIRE,ELECTRIC .....	FT	42
8	12	PAFZZ	5935-01-053-4011	MS27467E19B11S	96906	CONNECTOR,PLUG,ELEC .....	EA	1
8	13	XDFZZ		A20212-01	90484	WIRE,ELECTRICAL .....	FT	56
8	14	PAFZZ		MS27467E13B8P	96906	CONNECTOR,PLU.....	EA	1
8	15	PAFZZ	5935-01-038-5421	MS57467E13B8S	96906	CONNECTOR,PLUG,ELEC .....	EA	1
					<b>23</b>			

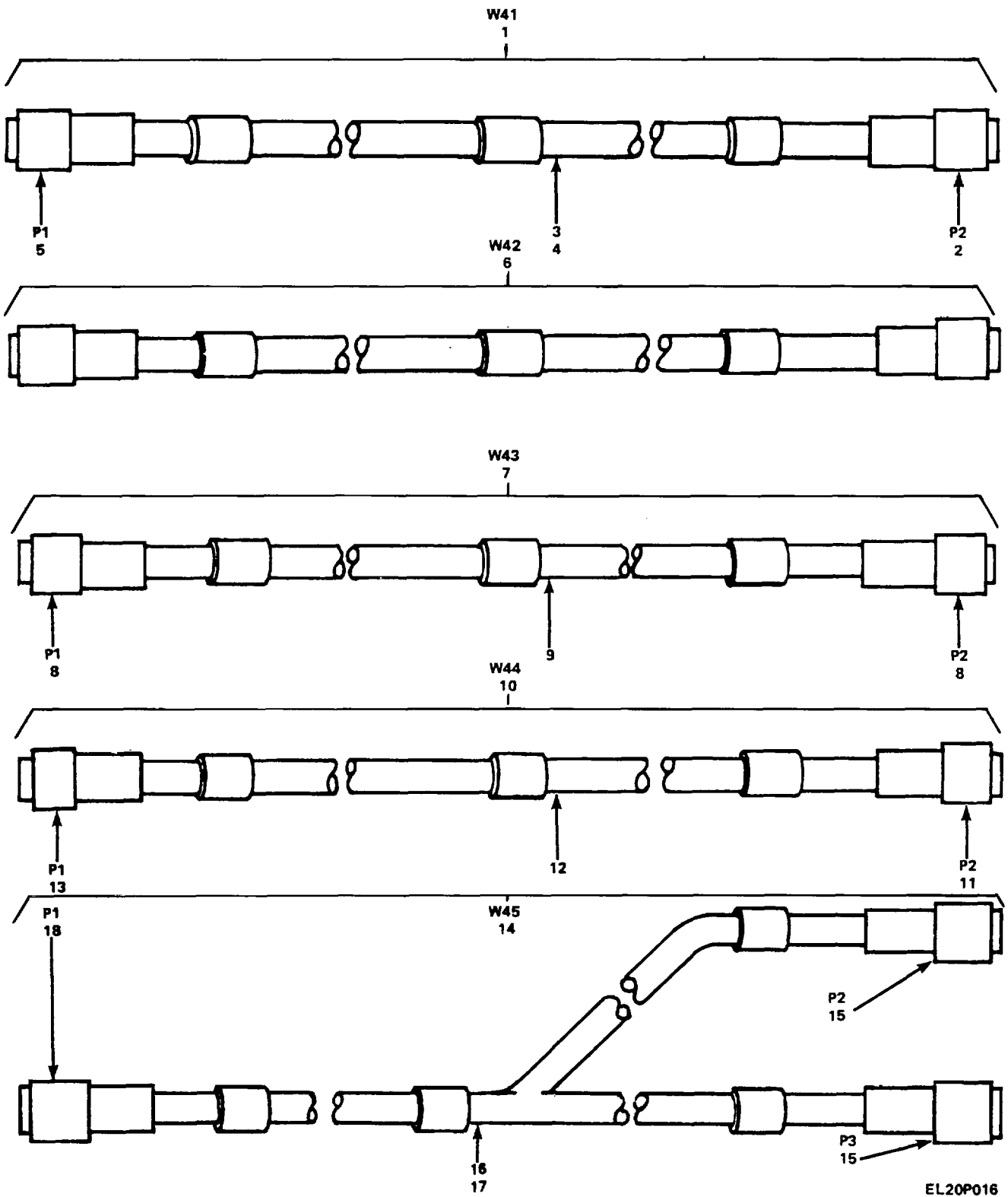


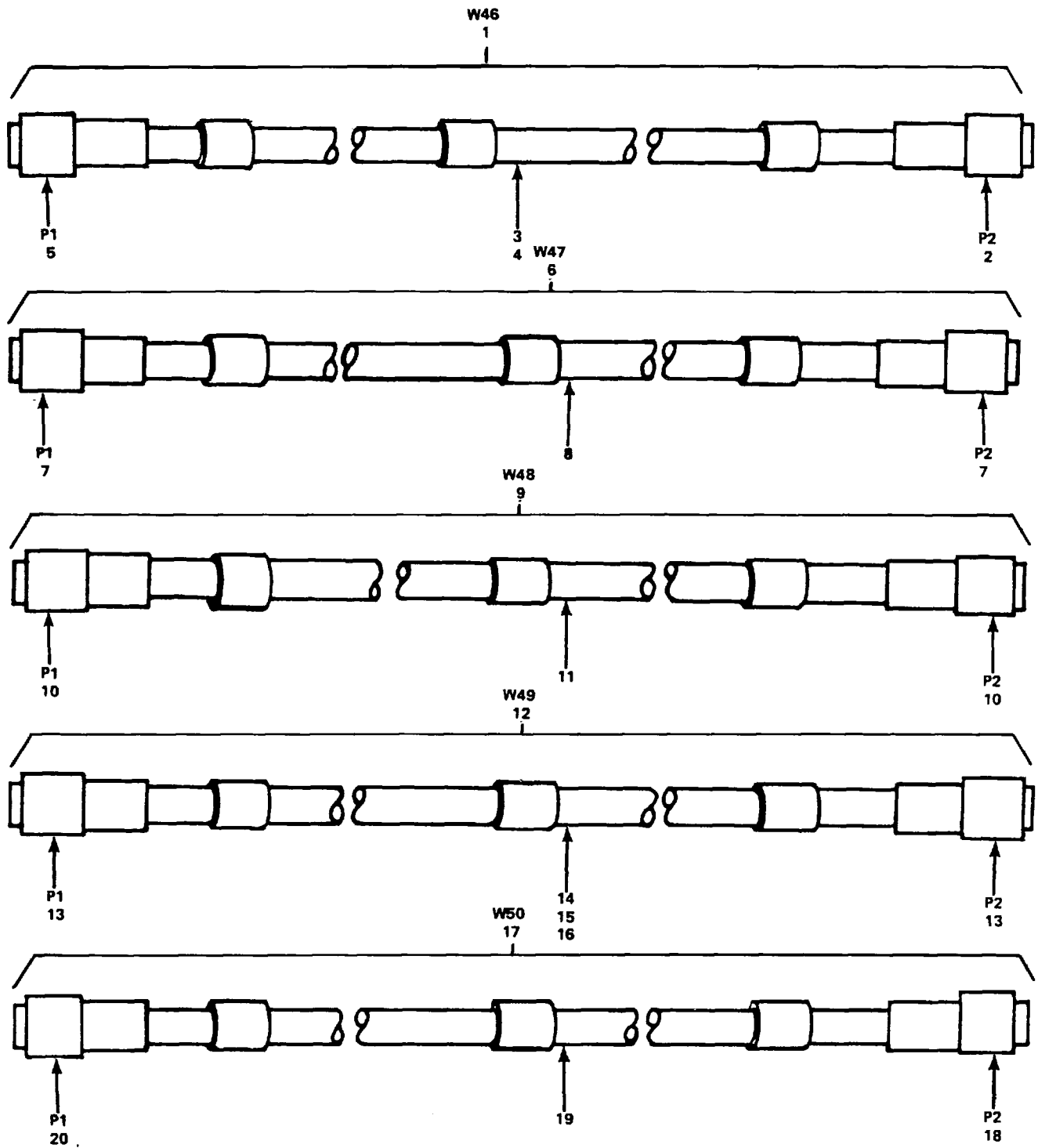
Figure 9. Cable Assemblies, W41 thru W45

SECTION II

TM 11-4940-476-24P

(1) ILLUSTRATION		(2)	(3)	(4)	(5)	(6) DESCRIPTION	(7)	(8)
(a) FIG NO.	(b) ITEM NO.	SMR CODE	NATIONAL STOCK NUMBER	PART NUMBER	FSCM	USABLE ON CODE	U/M	QTY INC IN UNIT
9	1	PAOFF	SNA871408	80063		CABLE ASSEMBL.....	EA	1
9	2	PAFZZ	5935-00-039-6673	MS27467E17B35S	96906	CONNECTOR,PLUG,ELEC .....	EA	1
9	3	XDFZZ		A2010-02-02	90484	CABLE,SPECIAL.....	EA	156
9	4	XDFZZ		A2010-01	90484	WIRE,ELECTRICAL .....	FT	18
9	5	PAFZZ	5935-00-038-6319	MS27476E178B35P	96906	CONNECTOR,PLUG,ELEC .....	EA	1
9	6	PAOZZ		SMA871409	80063	CABLE ASSEMBL.....	EA	1
9	7	PAOFF		SMA871410	80063	CABLE ASSEMBL.....	EA	1
9	8	PAFZZ		M39012-55-4009	81349	CONNECTOR,PLU.....	EA	2
9	9	PAFZZ		RG142BU	81349	CABLE,RADIO .....	FT	6
9	10	PAOFF		SMA871411	80063	CABLE ASSEMBL.....	EA	1
9	11	PAFZZ		MS27467E21816PA	96906	CONNECTOR,PLU.....	EA	1
9	12	XDFZZ		A2016-01	90484	WIRE,ELECTRICAL .....	FT	240
9	13	PAFZZ		MS27467E23B21S	96906	CONNECTOR,PLU.....	EA	1
9	14	PAOFF		SMA871412	80063	CABLE ASSEMBL.....	EA	1
9	15	PAFZZ		MS27467E13B35S	96906	CONNECTOR,PLU.....	EA	2
9	16	XDFZZ		A2010-01-02	90484	CABLE,SPECIAL.....	FT	120
9	17	XDFZZ		A2010-01	90484	WIRE,ELECTRICAL .....	FT	270
9	18	PAFZZ	5935-01-047-2287	MS27467E15B35P	96906	CONNECTOR,PLUG,ELEC .....	EA	1
					<b>25</b>			





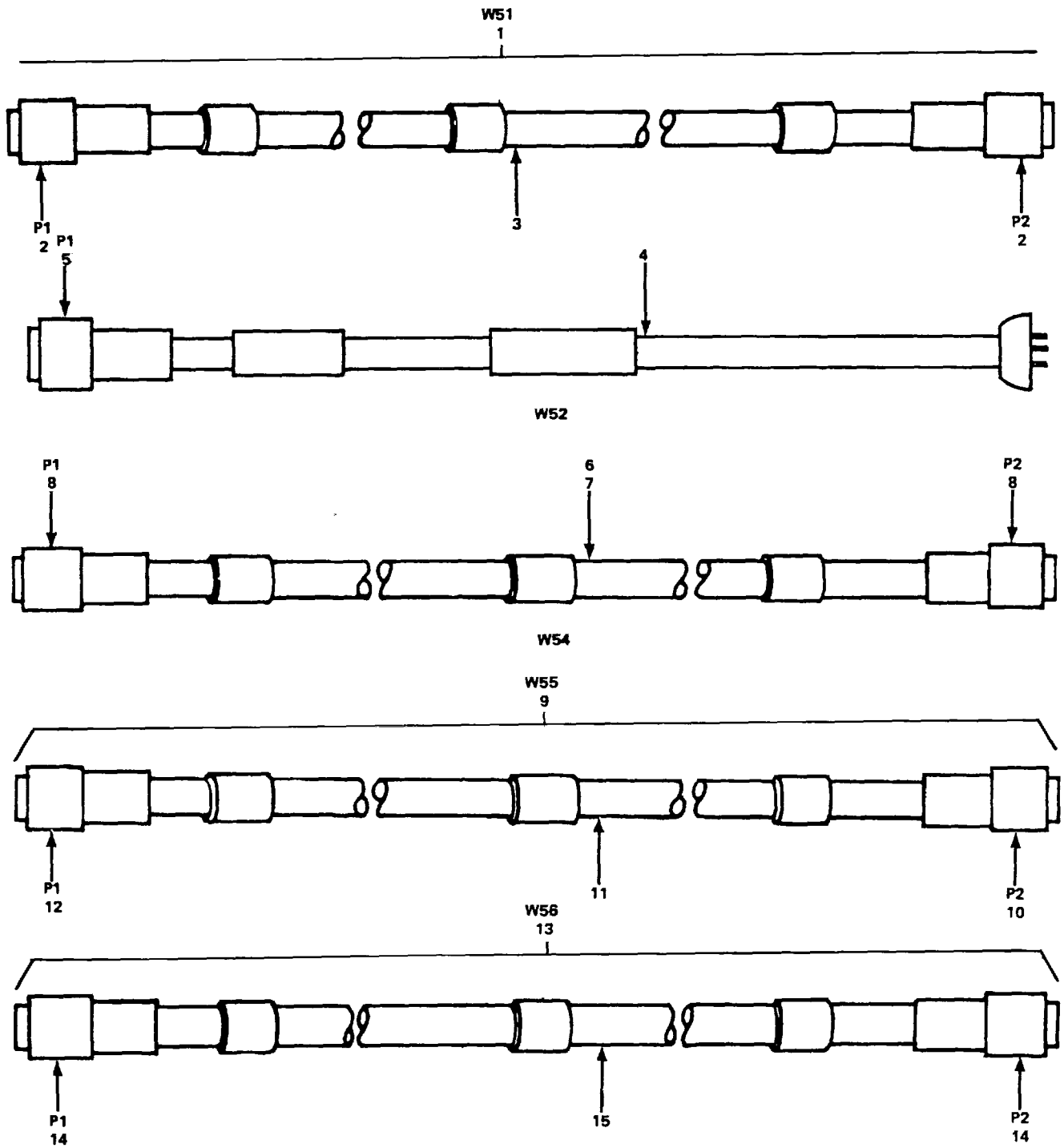
EL20P017

Figure 10. Cable Assemblies, W46 thru W50

SECTION II

TM 11-4940-476-24P

(1) ILLUSTRATION		(2)	(3)	(4)	(5)	(6) DESCRIPTION	(7)	(8)
(a) FIG NO.	(b) ITEM NO.	SMR CODE	NATIONAL STOCK NUMBER	PART NUMBER	FSCM	USABLE ON CODE	U/M	QTY INC IN UNIT
10	1	PAOFF		SMA871413	80063	CABLE ASSEMBL.....	EA	1
10	2	PAFZZ		MSZ1467E1935P	96906	CONNECTOR,PLU.....	EA	1
10	3	XDFZZ		A2010-01-02	90484	CABLE,SPECIAL.....	FT	450
10	4	XDFZZ		A2010-01	90484	WIRE,ELECTRICAL.....	FT	15
10	5	PAFZZ	5935-01-051-81	MS27467E19B35SB	96906	CONNECTOR,PLUG,ELEC.....	EA	1
10	6	PAOFF		SMA871414	80063	CABLE ASSSEMBL.....	EA	1
10	7	PAFZZ	5935-00-932-2791	OG18FO	80058	CONNECTOR,PLU,ELEC.....	EA	2
10	8	PAFZZ	6145-00-660-8054	RG2140	81349	CABLE,RADIO FREQUEN.....	FT	15
10	9	PAOFF		SMA871415	80063	CABLE ASSEMBL.....	EA	1
10	10	PAFZZ	5935-00-932-2791	OG18FU	80058	CONNECTOR.PLUG.ELEC.....	EA	2
10	11	PAFZZ	6145-00-660-8054	RG214U	81349	CABLE,RADIO.....	FT	15
10	12	PAOFF		SMA871371	80063	CABLE ASSEMBL.....	EA	1
10	13	PAFZZ		MS27467EI3B35S	96906	CONNECTOR,PLU.....	EA	2
10	14	XDFZZ		A2010-01-02	90484	CABLE,SPECIAL.....	FT	30
10	15	XDFZZ		A2010-01	90484	WIRE,ELECTRICAL.....	FT	42
10	16	XDFZZ		A2012-02	90484	WIRE.ELECTRICAL.....	FT	1
10	17	PAOFF		SMA871944	80063	CABLE ASSEMBL.....	EA	1
10	18	PAFZZ	5935-01-053-4011	MS2746E19B11S	96906	CONNECTOR,PLUG,ELEC.....	EA	1
10	19	XDFZZ		A2016-01	90484	WIRE,ELECTRICAL.....	FT	54
10	20	PAFZZ		MS27467E19B11P	96906	CONNECTOR,PLU.....	EA	1
					<b>27</b>			



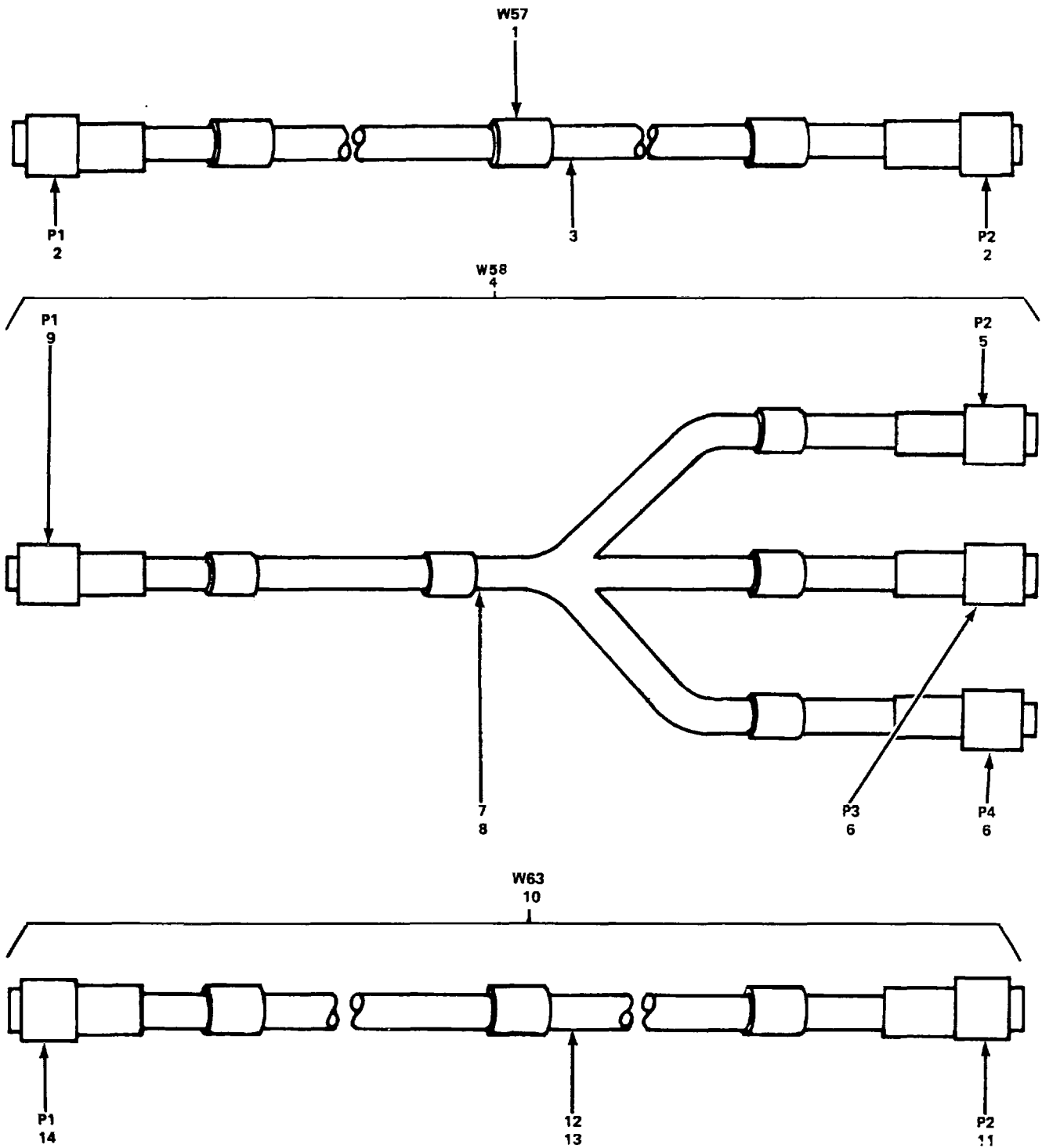
EL20P018

Figure 11. Cable Assemblies, W51, W52, W54, W55 and W56

SECTION II

TM 11-4940-476-24P

(1) ILLUSTRATION		(2)	(3)	(4)	(5)	(6)	(7)	(8)
(a) FIG NO.	(b) ITEM NO.	SMR CODE	NATIONAL STOCK NUMBER	PART NUMBER	FSCM	DESCRIPTION  USABLE ON CODE	U/M	QTY INC IN UNIT
11	1	PAOFF		SMA871418	80063	CABLE ASSEMBL.....	EA	1
11	2	PAFZZ		M39012-55-4009	81349	CONNECTOR,PLU.....	EA	2
11	3	PAFZZ		MILO17RG142BU	81349	CABLE,RADIO .....	FT	6
11	4	PAFZZ	6150-11-071-1180	17419	70903	CABLE ASSEMBLY,POWE .....	EA	1
11	5	PAFZZ	5935-01-053-4011	MS27467E19B11S	96906	CONNECTOR,PLUG,ELEC .....	EA	1
11	6	XDFZZ		A2012-01-02	90484	CABLE,SPECIAL.....	FT	208
11	7	XDFZZ		A2012-01	90484	WIRE,ELECTRICAL .....	FT	24
11	8	PAFZZ	5935-00-038-6319	MS27467E17B35P	96906	CONNECTOR,PLUG,ELEC .....	EA	2
11	9	PAOFF	5995-01-061-2424	SMA872855	80063	CABLE ASSEMBLE,SPEC.....	EA	1
11	10	PAFZZ	5935-01-044-8606	MS27467E15819P	96906	CONNECTOR,PLUG,ELEC .....	EA	1
11	11	XDFZZ		A2012-01	90484	WIRE,ELECTRICAL .....	FT	150
11	12	PAFZZ	5935-00-765-5990	MS3126F14-19SW	96906	CONNECTOR,PLUG,ELEC .....	EA	1
11	13	PAOFF	5995-01-061-2423	SMA872856	80063	CABLE ASSEMBL.....	EA	1
11	14	PAFZZ	5935-00-0508	M39012-16-001	81349	CONNECTOR,PLUG,ELEC .....	EA	2
11	15	PAFZZ		MILO7RG2230	81349	CABLE,RADIO .....	FT	8
					<b>29</b>			



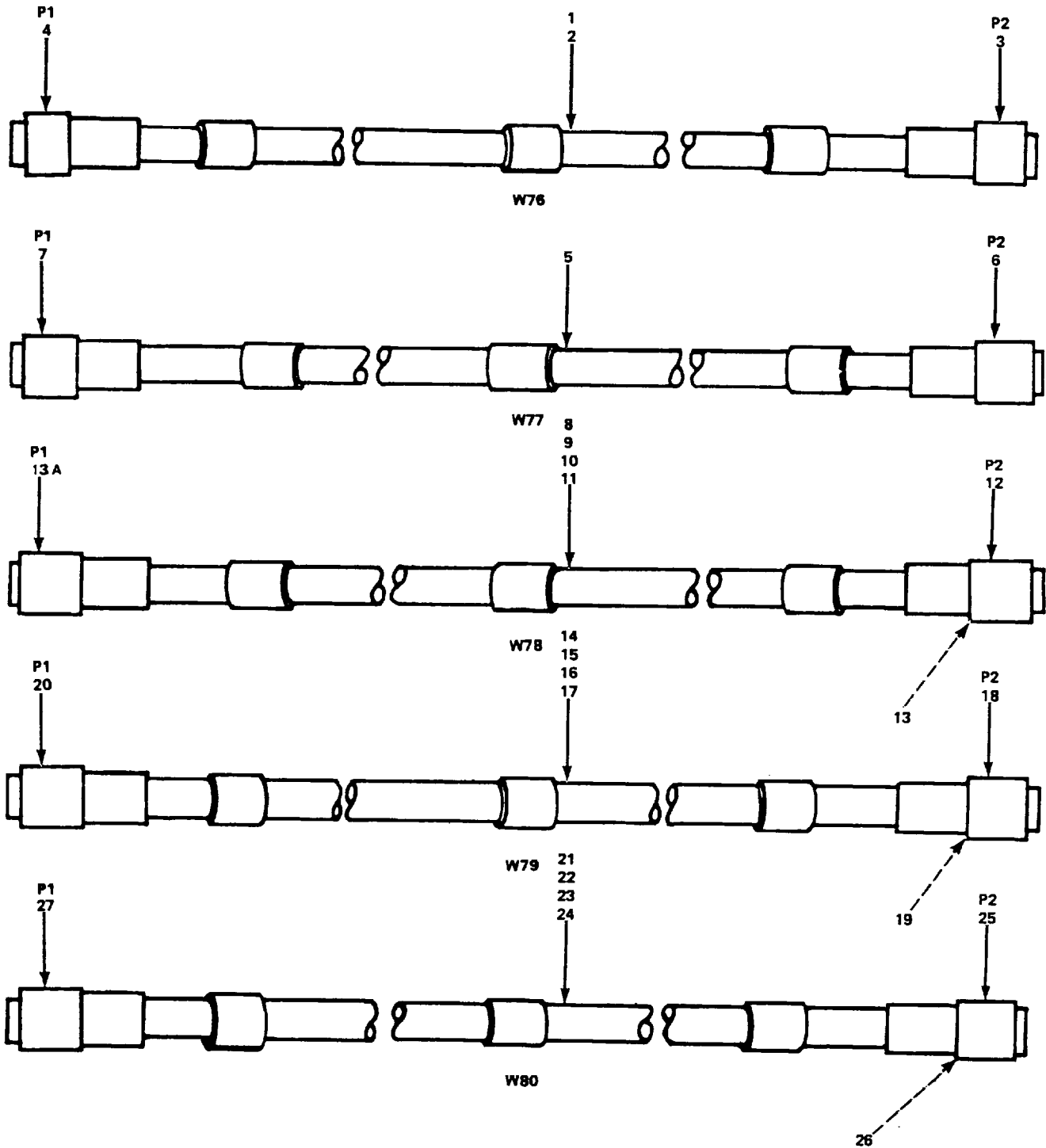
EL20P019

Figure 12. Cable Assemblies, W57, W58 and W63

SECTION II

TM 11-4940-476-24P

(1) ILLUSTRATION		(2)	(3)	(4)	(5)	(6) DESCRIPTION	(7)	(8)
(a) FIG NO.	(b) ITEM NO.	SMR CODE	NATIONAL STOCK NUMBER	PART NUMBER	FSCM	USABLE ON CODE	U/M	QTY INC IN UNIT
12	1	PAOFF	5995-01-061-2426	SMA872857	80063	CABLE ASSEMBLY.SPEC.....	EA	1
12	2	PAFZZ	5935-00-835-0508	M39012-16-0001	81349	CONNECTOR.PLUG,ELEC .....	EA	2
12	3	PAFZZ		MILC17RG223U	81349	CABLE,RADIO .....	FT	8
12	4	PAOFF	5995-01-061-2425	SMA872858	80063	CABLE ASSEMBL.....	EA	1
12	5	PAFZZ		MS27467E11B98PA	96906	CONNECTOR.PLU.....	EA	1
12	6	PAFZZ	5935-00-835-0508	M39012-16-001	81349	CONNECTOR,PLUG,ELEC .....	EA	2
12	7	PAFZZ		MILS17RG580	81349	CABLE,RADIO .....	FT	12
12	8	XDFZZ		A2012-01	90484	WIRE,ELECTRICAL .....	FT	12
12	9	PAFZZ		DPXAD16C3-34S	71468	CONNECTOR,PLU.....	EA	1
12	10	PAOFF		SMA871942	80063	CABLE ASSEMBL.....	EA	1
12	11	PAFZZ		MS27467E15B97S	96906	CONNECTOR,PLU.....	EA	1
12	12	XDFZZ		A2012-01	90484	WIRE, ELECTRICAL .....	FT	18
12	13	XDFZZ		A2016-01	90484	WIIRE,ELECTRICAL .....	FT	18
12	14	PAFZZ		MS27467E15B97P	96906	CONNECTOR,PLU.....	EA	1
					<b>31</b>			



EL20P020

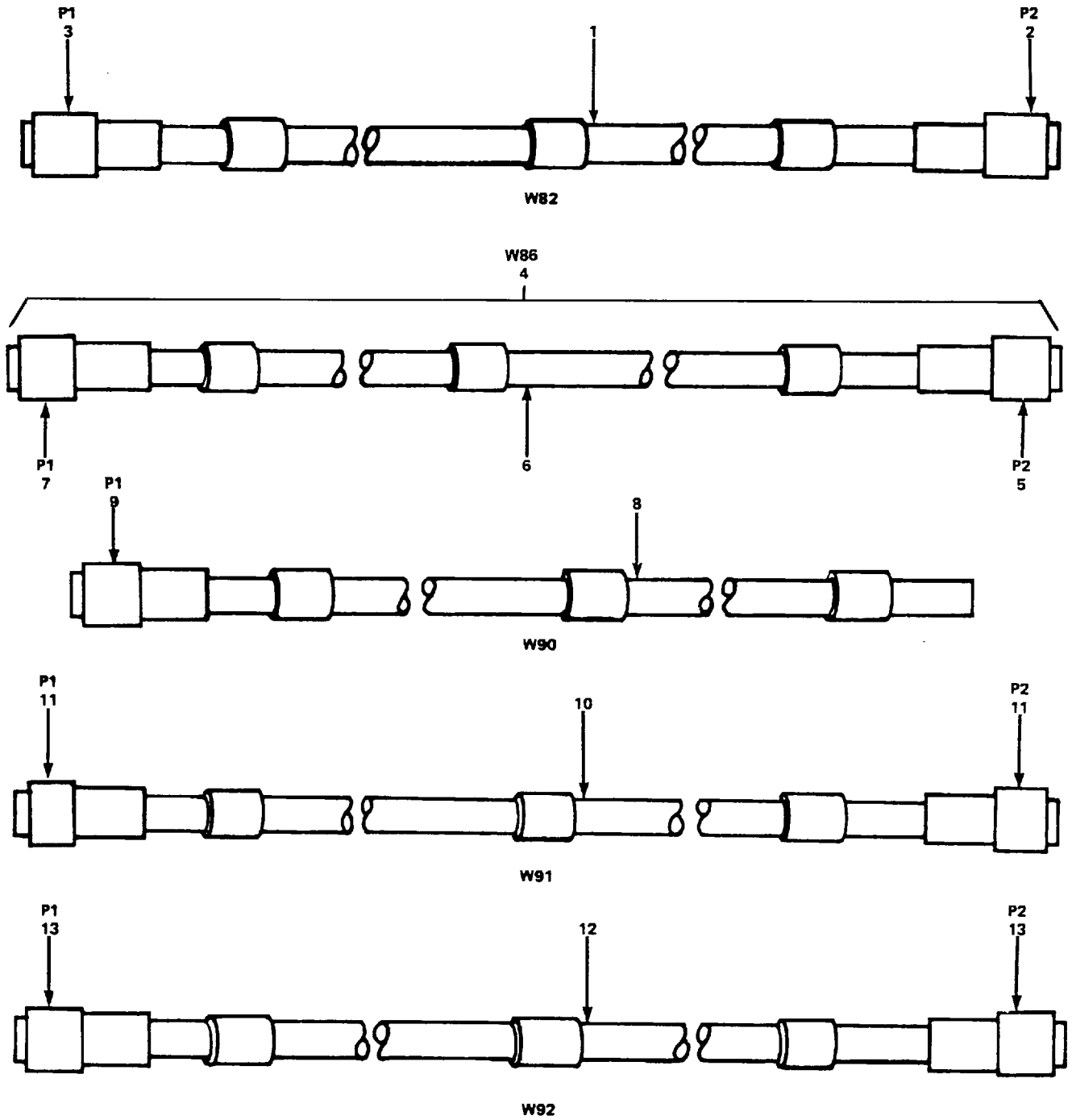
Figure 13. Cable Assemblies, W76 thru W80

SECTION II

TM 11-4940-476-24P

(1) ILLUSTRATION		(2)	(3)	(4)	(5)	(6)	(7)	(8)
(a) FIG NO.	(b) ITEM NO.	SMR CODE	NATIONAL STOCK NUMBER	PART NUMBER	FSCM	DESCRIPTION  USABLE ON CODE	U/M	QTY INC IN UNIT
13	1	XDFZZ		A2012-01-02	90484	CABLE,SPECIAL.....	FT	264
13	2	XDFZZ		A2010-01	90484	WIRE,ELECTRICAL .....	FT	144
13	3	PAFZZ	5935-00-450-8562	M81511-06EF01P5	81349	CONNECTOR,PLUG.ELEC .....	EA	1
13	4	PAFZZ	5935-00-342-2725	M81511-06EF01S4	81349	CONNECTOR,PLUG.ELEC .....	EA	1
13	5	XDFZZ		A2010-01-02	90484	CABLE,SPECIAL.....	FT	216
13	6	PAFZZ	5935-00-194-8102	MB1511-06EF01P6	81349	CONNECTOR,PLUG,ELEC .....	EA	1
13	7	PAFZZ	5935-00-506-6790	MB1511-06EF01S5	81349	CCNNECTOR,PLUG.ELEC.....	EA	1
13	8	XDFZZ		4SXVB19320JL4864	90484	CABLE,SPECIAL.....	FT	2
13	9	XDFZZ		A2012-01	90484	WIRE,ELECTRICAL .....	FT	4
13	10	XDFZZ		A2012-02	90484	WIRE,ELECTRICAL .....	FT	1
13	11	XDFZZ		A2016-01	90484	WIRE,ELECTRICAL .....	FT	8
13	12	PAFZZ	5935-00-421-6038	DBMM9W4S	71468	CONNECTOR,RECEPTACL.....	EA	1
13	13	PAFZZ	5999-00-847-9801	DM53744-1	71468	CONTACT,ELECTRICAL .....	EA	3
13	14	XDFZZ		4SXVB1932UJL4864	90484	CABLE,SPECIAL.....	FT	2
13	15	XDFZZ		A2012-01	90484	WIRE,ELECTRICAL .....	FT	4
13	16	XDFZZ		A2012-02	90484	WIRE,ELECTRICAL .....	FT	2
13	17	XDFZZ		A2016-01	90484	WIRE,ELECTRICAL .....	FT	8
13	18	PAFZZ	5935-00-421-6038	DBMM9W4S	71468	CONNECTOR,RECEPTACL.....	EA	1
13	19	PAFZZ	5999-00-847-9801	DM53744-1	71468	CONTACT,ELECTRICAL .....	EA	3
13	20	PAFZZ		MS27467E15B97PB	96906	CONNECTOR,PLU.....	EA	1
13	21	XDFZZ		4SXVB1932UJL4864	90484	CABLE,SPECIAL.....	FT	2
13	22	XDFZZ		A2012-01	90484	WIRE,ELECTRICAL .....	FT	12
13	23	XDFZZ		A2012-02	90484	WIRE,ELECTRICAL .....	FT	2
13	24	XDFZZ		A2016-01	90484	WIRE,ELECTRICAL .....	FT	4
13	25	PAFZZ	5935-00-102-9544	DCM21W4S	71468	CONNECTOR,RECEPTACL.....	EA	1
13	26	PAFZZ	5999-00-847-9801	DM53744-1	71468	CONTACT,ELECTRICAL .....	EA	4
13	27	PAFZZ		MS27467E17B99P	96906	CONNECTOR,PLU.....	EA	1
					<b>33</b>			





EL20P021

Figure 14. Cable Assemblies, W82, W86, W90, W91 and W92

SECTION II

TM 11-4940-476-24P

(1) ILLUSTRATION		(2)	(3)	(4)	(5)	(6)	(7)	(8)
(a) FIG NO.	(b) ITEM NO.	SMR CODE	NATIONAL STOCK NUMBER	PART NUMBER	FSCM	DESCRIPTION  USABLE ON CODE	U/M	QTY INC IN UNIT
14	1	XDFZZ		A2016-01	90484	WIRE,ELECTRICAL .....	FT	45
14	2	PAFZZ	5935-01-053-4011	MS27467E19B11S	96906	CONNECTOR,.PLUG,ELEC .....	EA	1
14	3	PAFZZ		MS27467E19B11P	96906	CONNECTOR,PLU.....	EA	1
14	4	PAOFF		SMA871420	80063	CABLE ASSEMBL.....	EA	1
14	5	PAFZZ		AP7-4CSI5	05574	CONNECTOR,PLU.....	EA	1
14	6	XDFZZ		A2012-01	90484	WIRE,ELECTRICAL .....	FT	36
14	7	PAFZZ		MS27467E15B18PC	96906	CONNECTOR,PLU.....	EA	1
14	8	XDFZZ		A2016-01	90484	WIRE,ELECTRICAL .....	FT	90
14	9	PAFZZ		MS27467E21B16SB	96906	CONNECTOR,PLU.....	EA	1
14	10	PAFZZ	6145-00-661-0191	RG59BU	81349	CABLE,RADIO FREQUEN.....	FT	6
14	11	PAFZZ	5935-00-496-9389	M39012-26-0002	81349	CONNECTOR,PLUG.ELEC .....	EA	2
14	12	PAFZZ	6145-00-661-0191	RG59BU	81349	CABLE,RADIO .....	FT	6
14	13	PAFZZ	5935-00-496-9389	M39012-26-0002	81349	CONNECTOR.PLUG,ELEC .....	EA	2
					<b>35</b>			

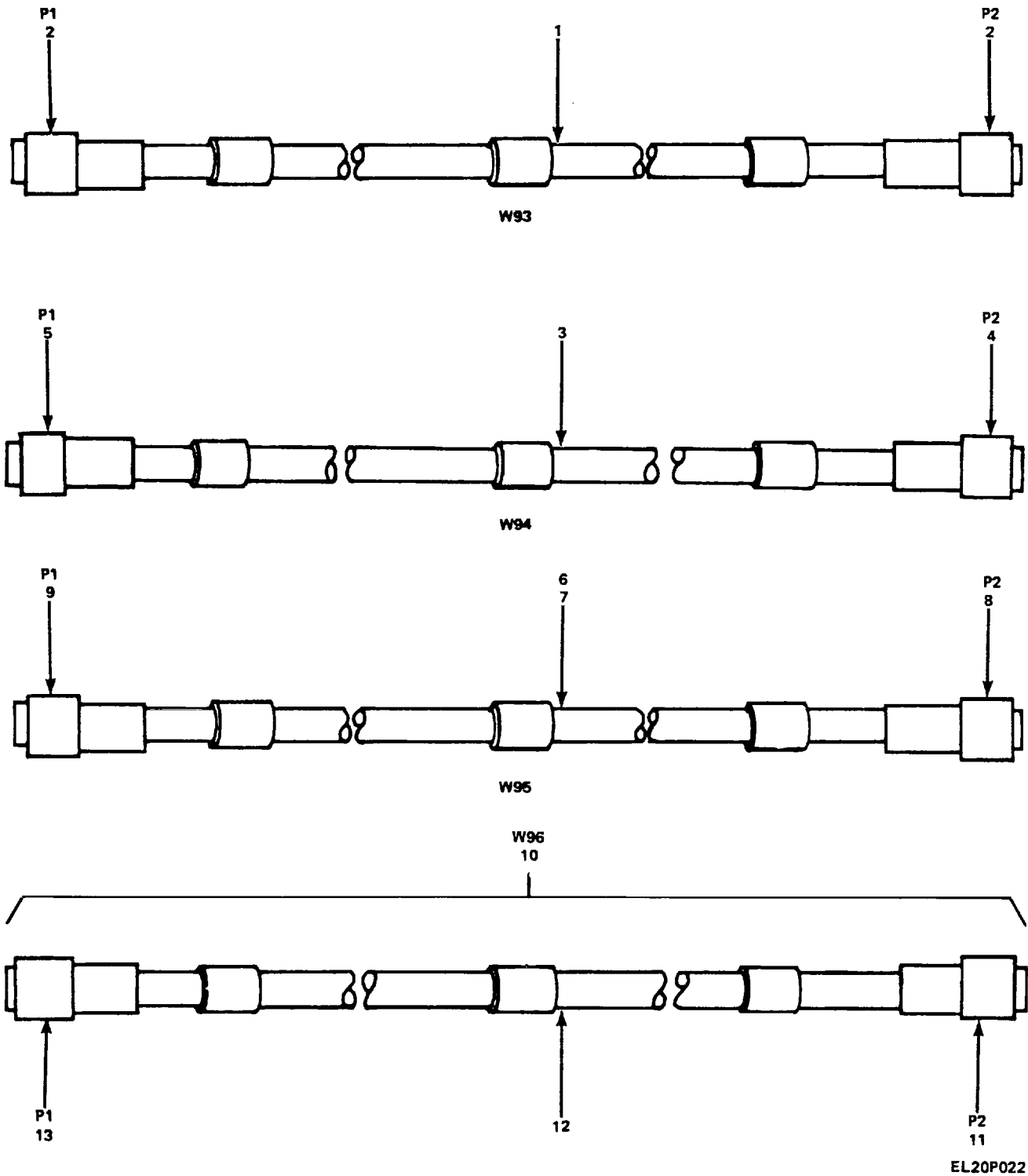
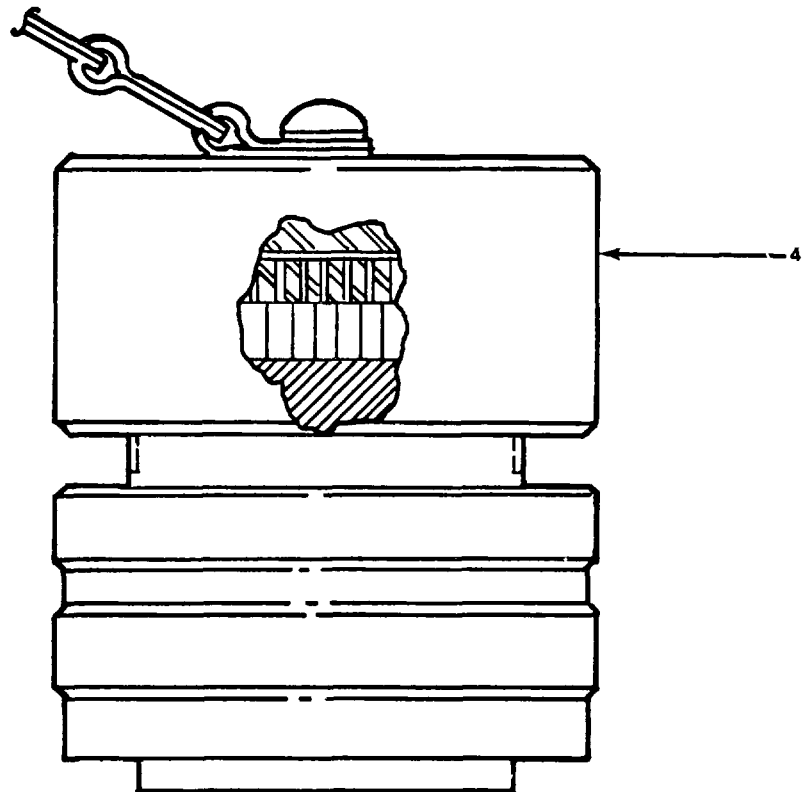
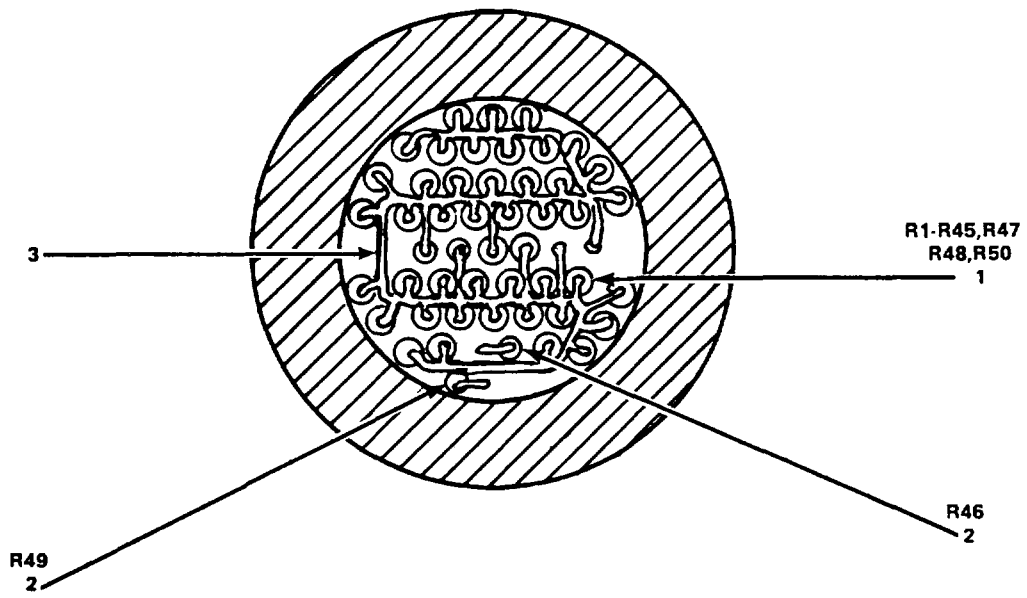


Figure 15. Cable Assemblies, W93 thru W96

SECTION II

TM 11-4940-476-24P

(1) ILLUSTRATION		(2)	(3)	(4)	(5)	(6) DESCRIPTION	(7)	(8)
(a) FIG NO.	(b) ITEM NO.	SMR CODE	NATIONAL STOCK NUMBER	PART NUMBER	FSCM	USABLE ON CODE	U/M	QTY INC IN UNIT
15	1	PAFZZ			81349	CABLE,RADIO .....	FT	6
15	2	PAFZZ	5935-00-496-9389		81349	CONNECTOR,PLUG,ELEC .....	EA	2
15	3	PAFZZ	6145-00-681-7849	RG223U	81349	CABLE,RADIO FREQUEN .....	FT	6
15	4	PAFZZ	5935-00-835-0508	UG88GU	80058	CONNECTOR.PLUG,ELEC .....	EA	1
15	5	PAFZZ	5935-00-400-4775	M39012/26-0001	81349	CONNECTOR,PLUG,ELEC .....	EA	1
15	6	XDFZZ		A2010-01-02	90484	CABLE,SPECIAL.....	FT	24
15	7	XDFZZ		A2010-01	90484	WIRE,ELECTRICAL .....	FT	12
15	8	PAFZZ		MS27467E11B35S	96906	CONNECTOR,PLU.....	EA	1
15	9	PAFZZ	5935-01-012-1277	MS27467E11B35P	96906	CONNECTOR,PLUG,ELEC .....	EA	1
15	10	PAOFF		SMA871961	80063	CABLE,ASSEMBL.....	EA	1
15	11	PAFZZ	5935-01-006-0121	MS27467E11B98P	96906	CONNECTOR,PLUG,ELEC .....	EA	1
15	12	XDFZZ		A2012-01-02	90484	CABLE,SPECIAL.....	FT	30
15	13	PAFZZ	5935-01-030-2813	96906		CONNECTOR,PLUG,ELEC .....	EA	1
					<b>37</b>			



EL20P023

Figure 16. Resistor Termination Assembly

SECTION II

TM 11-4940-476-24P

(1) ILLUSTRATION		(2)	(3)	(4)	(5)	(6)	(7)	(8)
(a) FIG NO.	(b) ITEM NO.	SMR CODE	NATIONAL STOCK NUMBER	PART NUMBER	FSCM	DESCRIPTION  USABLE ON CODE	U/M	QTY INC IN UNIT
16	1	PAFZZ	5905-00-515-7257	RCR05G560JP	81349	RESISTOR, FIXED, COMP .....	EA	48
16	2	PAFZZ	5905-00-028-9536	KCR05G121JP	81349	RESISTOR, FIXED, COMP .....	EA	2
16	3	XDFZZ		QQ343TYPE22AWG WIRE, ELECTRICAL SOFT TINNED	81349	.....	FT	2
16	4	XDFZZ	5935-00-038-6319	MS27467E17B35P	96906	CONNECTOR, PLUG, ELEC .....	EA	1
					<b>39</b>			

NATIONAL STOCK NUMBER INDEX

NOTE: LATEST NATIONAL STOCK NUMBER AND PART NUMBER ASSIGNMENTS ARE INCLUDED AT END OF

INDEX.

STOCK NUMBER	FIG.	ITEM	STOCK NUMBER	FIG.	ITEM
6625-00-003-8544	1	36	5935-00-835-0508	12	6
5905-00-028-9536	16	2	5935-00-835-0508	15	4
5935-00-038-6319	5	4	5999-00-847-9801	13	13
5935-00-038-6319	7	3	5999-00-847-9801	13	19
5935-00-038-6319	7	6	5999-00-847-9801	13	26
5935-00-038-6319	9	5	6145-00-918-9494	4	6
5935-00-038-6319	11	8	5935-00-932-2791	10	7
5935-00-038-6319	16	4	5935-00-932-2791	10	10
6625-00-053-3112	1	11	5935-01-006-0121	7	9
6150-00-071-1180	3	3	5935-01-006-0121	15	11
6150-00-017-1180	11	4	5935-01-009-0208	6	21
5985-00-084-4110	1	25	2935-01-012-1277	15	9
5935-00-087-0426	6	8	5935-01-013-0987	6	5
5535-00-087-0426	6	13	5935-01-013-0987	6	20
5985-00-087-2547	1	24	5935-01-016-8597	6	2
5935-00-102-9544	13	25	5935-01-016-8597	8	7
6130-00-165-2213	1	60	5865-01-023-6779	1	13
6625-00-167-1144	1	30	5665-01-024-0381	1	49
6625-00-167-1144	5	11	5865-01-024-0388	1	46
6625-00-177-1639	1	9	5865-01-024-0390	1	56
5935-00-189-3213	6	11	5865-01-024-0391	1	5
5935-00-189-3213	6	17	5865-01-024-0417	1	2
5935-00-194-8102	13	6	5865-01-024-0429	1	58
6625-00-197-8443	1	33	5865-01-024-0448	1	7
7025-00-214-0895	1	48	5865-01-024-0449	1	6
6625-00-253-4833	1	35	5865-01-024-0450	1	45
6625-00-254-6671	1	19	7035-01-024-0953	1	50
5935-00-342-2725	13	4	5865-01-024-3845	1	42
			5865-01-024-3883	1	44
5935-00-400-4775	15	5	5865-01-024-3897	1	41
5935-00-421-6038	13	12	7035-01-024-7913	1	53
5935-00-421-6038	13	18	6625-01-026-8402	1	34
6625-00-431-9339	1	38	6625-01-026-9914	1	10
5935-00-450-8562	13	3	5935-01-030-2813	7	8
5935-00-470-4190	7	16	5935-01-030-2813	15	13
5935-00-470-4192	7	15	5865-01-031-4052	1	54
5935-00-496-9389	14	11	5935-01-031-4875	5	6
5935-00-496-9389	14	13	6930-01-032-4286	1	1
5935-00-496-9389	15	2	5935-01-038-5421	8	15
5935-00-506-6790	13	7	5935-01-039-6673	5	3
5905-00-515-7257	16	1	5935-01-039-6673	9	2
5985-00-615-3104	1	27	7035-01-041-3437	1	52
5985-00-626-4370	1	29	5935-01-044-8606	11	10
5985-00-655-7589	1	28	5935-01-047-2287	9	18
6145-00-660-8054	10	8	5935-01-051-8167	5	8
6145-00-660-8054	10	11	5935-01-051-8167	10	5
6145-00-661-0191	14	10	5935-01-053-4011	3	4
6145-00-661-0191	14	12	5935-01-053-4011	8	2
6145-00-681-7849	15	3	5935-01-053-4011	8	12
5935-00-765-5990	11	12	5935-01-053-4011	10	18
5935-00-811-7526	3	12	5935-01-053-4011	11	5
5935-00-811-7526	4	2	5935-01-053-4011	14	2
6145-00-612-8832	3	13	5999-01-054-6483	2	24
6625-00-813-8430	1	31	5995-01-061-2423	11	13
6145-00-823-2544	3	9	5995-01-061-2424	11	9
5985-00-834-3662	1	26	5995-01-061-2425	12	4
5935-00-835-0508	11	14	5995-01-061-2426	12	1
5935-00-835-0508	12	2	6625-01-062-3110	1	55

PART NUMBER	FSCM	FIG. NO.	ITEM NO.	PART NUMBER	FSCM	FIG. NO.	ITEM NO.
ANURM120	80058	1	31	A2010-01-02	90484	3	1
ANUSM223A	80058	1	30	A2010-01-02	90484	3	5
ANUSM281C	80058	1	11	A2010-01-02	90484	5	1
AP7-4CS15	05574	14	5	A2010-01-02	90484	5	7
A2010-01	90484	3	6	A2010-01-02	90484	6	10
A2010-01	90484	5	2	A2010-01-02	90484	6	14
A2010-01	90484	6	15	A2010-01-02	90484	6	18
A2010-01	90484	6	19	A2010-01-02	90484	6	6
A2010-01	90484	7	5	A2010-01-02	90484	7	4
A2010-01	90484	7	2	A2010-01-02	90484	7	1
A2010-01	90484	9	17	A2010-01-02	90484	9	16
A2010-01	90484	9	4	A2010-01-02	90484	9	3
A2010-01	90484	10	15	A2010-01-02	90484	10	14
A2010-01	90484	10	4	A2010-01-02	90484	10	3
A2010-01	90484	11	7	A2010-01-02	90484	11	6
A2010-01	90484	13	2	A2010-01-02	90484	13	1
A2010-01	90484	15	7	A2010-01-02	90484	13	5

SECTION IV

NATIONAL STOCK NUMBER AND PART INDEX

PART NUMBER	FSCM	FIG. NO.	ITEM NO.	PART NUMBER	FSCM	FIG. NO.	ITEM NO.
A2010-01-02	90484	15	6	MS27467E13B8P	98906	8	14
A2010-02	90484	6	9	MS27467E13B8S	98906	8	15
A2010-02	90484	6	16	MS27467E15B18PC	98906	14	7
A2012-01	90484	7	7	MS27467E15B19P	98906	11	10
A2012-01	90484	4	15	MS27467E15B35P	98906	9	18
A2012-01	90484	7	10	MS27467E15B97P	98906	4	17
A2012-01	90484	8	10	MS27467E15B97P	98906	7	13
A2012-01	90484	8	13	MS27467E15B97P	98906	12	14
A2012-01	90484	11	11	MS27467E15B97PA	98906	13	13A
A2012-0L	90484	12	8	MS27467E15B97PB	98906	13	20
A2010-01	90484	12	12	MS27467E15B97S	98906	4	14
A2012-01	90484	13	9	MS27467E15B97S	98906	7	12
A2010-01	90484	13	15	MS27467E15B97S	98906	12	11
A2012-01	90484	13	22	MS27467E17B26P	98906	5	6
A2012-01	90484	14	6	MS27467E17B35P	98906	5	4
A2012-01-02	90484	15	12	MS27467E17B35P	98906	7	3
A2012-02	90484	3	7	MS27461E17B35P	98906	7	6
A2012-02	90484	8	5	MS27467E17B35P	98906	9	5
A2012-02	90484	10	16	MS27467E17B35P	98906	11	8
A2012-02	90484	13	10	MS27467E17B35P	98906	16	4
A2012-02	90484	13	16	MS27467E17B35S	98906	5	3
A2012-02	90484	13	23	MS27467E17B35S	98906	9	2
A2016-01	90484	4	16	MS27467E17B8P	98906	6	3
A2016-01	90484	5	13	MS27467E17B99P	98906	13	27
A2316-01	90484	6	1	MS27467E19B11P	98906	8	3
A2016-01	90484	7	11	MS27467E19B11P	98906	10	20
A2016-01	90484	7	14	MS27467E19B11P	98906	14	3
A2016-01	90484	8	1	MS27467E19B11S	98906	3	4
A2016-01	90484	8	6	MS27467E9B11S	98906	8	2
A2016-1	90484	8	8	MS27467E19B11S	98906	8	12
A2016-01	90484	8	11	MS27467E19B11S	98906	10	18
A2016-01	90484	9	12	MS27467E19B11S	98906	11	5
A2016-01	90484	10	19	MS27467E19811S	98906	14	2
A2016-01	90484	12	13	MS27467E19B35P	98906	3	2
A2016-01	90484	13	11	MS27467E19B35P	98906	10	2
A2016-01	90484	13	17	MS27467E19B35S	98906	5	8
A2016-01	90484	13	24	MS27467E19B35SB	98906	10	5
A2016-01	90484	14	1	MS27467E21B16P	98906	5	12
A2016-01	90484	14	8	MS27467E21B16P	98906	5	15
BB5C7	80058	1	43	MS27467E21B16PA	98906	9	11
CN1197U	80058	1	25	MS27467E21B16S	98906	5	14
CN1199U	80058	1	27	MS27467E21B16S	98906	5	10
CN1200U	80058	1	28	MS27467E21B16SB	98906	8	9
CN796AU	80058	1	24	MS27467E21B16SB	98906	14	9
DA75U	81349	1	9	MS27467E23B21S	98906	9	13
DBMM9W4S	71468	13	12	MS27467E23B35P	98906	6	21
DBMM9W4S	71468	13	18	MS27467E25B29P	98906	7	15
DCM21W4S	71468	13	25	MS27467E25B29S	98906	7	16
DM53744-1	71468	13	13	MS3126F14-19SW	98906	11	12
DM53744-1	71468	13	19				
DM53744-1	71468	13	26	M39012-16-0001	81349	11	14
DPXAD16C3-34S	71468	12	9	M39012-16-0001	81349	12	2
HP11661B	28480	1	15	M39012-16-0001	81349	12	6
HP141T	28480	1	36	M39012-26-0002	81349	14	11
HP534QAR001	28480	1	4	M39012-26-0002	81349	14	13
HP8405AR	28480	1	40	M39012-26-0002	81349	15	2
HP8555AR	28480	1	37	M39012-55-4009	81349	3	10
				M39012-55-4009	81349	9	8
HP86603A	28480	1	16	M39012-55-4009	81349	11	2
HP86631B	28480	1	17	M39012/26-0001	81349	15	5
HP86632B	28480	1	32	M81511-06EF01P3	81349	6	11
MILC17RG142BU	81349	11	3	M81511-06EF01P3	81349	6	17
MILC17RG195U	81349	4	3	M81511-06EF01P4	81349	6	8
MILC17RG223U	81349	11	15	M81511-06EF01P4	81349	6	13
MILC17RG223U	81349	12	3	M81511-06EF01P5	81349	13	3
MILC17RG316U	81349	4	9	M81511-06EF01P6	81349	13	6
MILC17RG316U	81349	4	12	M81511-06EF01S1	81349	6	5
MILC17RG59BU	81349	15	1	M81511-06EF01S1	81349	6	20
MILS17RG58U	81349	12	7	M81511-06EF01S4	81349	13	4
MODEL 2000	80249	1	48	M81511-06EF01S5	81349	13	7
MS27467E11B35P	96906	15	9	M81511-26ED03S1	81349	6	2
MS27467E11B35S	96906	15	8	M81511-26ED03S1	81349	8	7
MS27467E11B98P	96906	7	9	P6053B	80009	1	8
MS27467E11B98P	96906	15	11	QQW343TYPE22AWG SOFT TINNED	81349	16	3
MS27467E11B98PA	96906	12	5	RCR05G121JP	81349	16	2
MS27467E11B98S	96906	7	8	RCR05G560JP	81349	16	1
MS27467E11B98S	96906	15	13	RG142BU	81349	3	9
MS27467E13B35S	96906	3	8	RGI426U	81349	9	9
MS27467E13B35S	96906	9	15	RGS195AU	81349	3	13
MS27467E13B35S	96906	10	13	RG214U	81349	10	8



SECTION IV

NATIONAL STOCK NUMBER AND PART INDEX

PART NUMBER	FSCM	FIG. NO.	ITEM NO.	PART NUMBER	FSCM	FIG. NO.	ITEM NO.
RG214U	81349	10	11	SMA871420	80063	14	4
RG223U	81349	15	3	SMA871422	80063	2	1
RG316/U	81349	4	6	SMA871423	80063	2	14
RG598U	81349	14	10	SMA871424	80063	2	3
RG598U	81349	14	12	SMA871425	80063	2	2
SM-C-871456	80003	2	24	SMA871426	80063	2	16
SM-D-551651	80063	5	11	SMA871427	80063	2	23
SM-D-870072	80063	1	45	SMA871465	80063	2	18
SM-D-870100	80063	1	2	SMA871721	80063	6	7
SM-D-870346	80063	1	5	SMA871722	80063	6	4
SM-D-810364	80063	1	41	SMA871843	80063	6	12
SM-D-870394	80063	1	58	SMA871942	80063	12	10
SM-D-870408	80063	1	44	SMA871943	80063	4	13
SM-D-870510	80063	1	13	SMA871944	80063	10	17
SM-D-870529	80063	1	50	SMA871949	80063	2	9
SM-D-870553	80063	1	42	SMA871951	80063	2	15
SM-D-870568	80063	1	7	SMA871961	80063	15	10
SM-D-870634	80063	1	10	SMA872019	80063	2	35
SM-D-870768	80063	1	54	SMA872020	80063	2	10
SM-D-870774	80063	1	49	SMA872161	80063	1	22
SM-D-870783	80063	1	1	SMA872855	80063	11	9
SM-D-870817	80063	1	6	SMA872856	80063	11	13
SM-D-870830	80063	1	56	SMA872857	80063	12	1
SM-D-871060	80063	1	46	SMA872858	80063	12	4
SM-D-872208	80063	1	53	SMA872915	80063	2	33
SMA870833	80063	2	21	SMC871480	80063	2	36
SMA870839	80003	2	20	SMC873005	80063	2	27
SMA871136	80063	2	22	UG18FU	80063	10	7
SMA871371	80063	10	12	UG18FU	80063	10	10
SMA871372	80063	2	37	UG88GU	80063	15	4
SMA871373	80063	2	11	V477USM	80058	1	47
SMA871374	80063	2	13	11570A	28480	1	33
SMA871375	80063	2	12	17419	70903	3	3
SMA871376	80063	2	6	17419	70903	11	4
SMA871378	80063	2	17	18CR	28480	1	20
SMA871379	80063	2	26	20020PSF	16179	2	34
SMA871381	80063	2	25	245	51692	1	51
SMA871382	80063	2	5	37000-424	15933	1	39
SMA871383	80063	2	4	4SXVB1932UJL4864	90484	13	8
SMA871384	80063	2	8	45XVB1932UJL4864	90484	13	14
SMA871385	80063	2	19	45XV61932UJL4864	90484	13	21
SMA871389	80063	2	31	41-4E	04901	1	34
SMA871390	80063	2	28	42BDCPT1ON01AND09	04901	1	21
SMA871391	80063	2	29	50-2C	93459	1	29
SMA871392	80063	2	30	50-4	93459	1	26
SMA871393	80063	2	32	51-0007-0000	98291	4	5
SMA871394	80063	3	11	51-0007-0000	98291	4	8
SMA871395	80063	4	1	51-0007-0000	98291	4	11
SMA871396	80063	4	4	51-107-0000	98291	3	12
SMA871397	80063	4	7	51-107-0000	98291	4	2
SMA871398	80063	4	10	620BR	620BR	1	3
SMA871400	80063	5	5	626A	28480	1	23
SMA871401	80063	5	9	628AR	28480	1	18
SMA871405	80063	8	4	7A18NOPTION6	80009	1	12
SMA871408	80063	9	1	7015-7	24429	1	60
SMA871409	80063	9	6	7D15-14	24429	1	57
SMA871410	80063	9	7	7101616-00	90536	1	55
SMA871411	80063	9	10	7101616-01	90536	1	52
SMA871412	80063	9	14	8D362A	24429	1	59
SMA871413	80063	10	1	8445B	28480	1	35
SMA871414	80063	10	6	8552B	28480	1	38
SMA871415	80063	10	9	8616A	28480	1	19
SMA871418	80063	11	1				

LATEST NATIONAL STOCK NUMBER ASSIGNMENTS LATEST PART NUMBER ASSIGNMENTS

STOCK NUMBER	FIG.	ITEM	PART NUMBER	FSCM	FIG. NO.	ITEM NO.
6625-00-005-6532	1	17	HP8660C-100	28480	1	14
			SMA871407	80063	2	7
			618CR	28480	1	20
6625-00-050-4873	1	12				
6625-00-445-6917	1	23				
6625-00-454-0708	1	39				
6625-00-859-3421	1	18				
6625-00-921-1897	1	40				
6625-01-003-7413	1	15				
6625-01-042-0925	1	14				
6625-01-050-8799	1	16				
6625-01-050-8800	1	21				

By Order of the Secretary of the Army:

BERNARD W. ROGERS  
General, United States Army  
Chief of Staff

Official:

J. C. PENNINGTON  
*Brigadier General, United States Army*  
*The Adjutant General*

Distribution:

*Active Army:*

TSG (1)  
USAARENBD (1)  
USAINSCOM (2)  
TRADOC (2)  
DARCOM (1)  
TECOM (2)  
OS Maj Cmd (2)  
USACC (2)  
HISA (Ft Monmouth) (26)  
Armies (1)  
USASIGS (5)  
Svc Colleges (1)  
Ft Huachuca (5)  
Ft Richardson (CERCOM Ofc) (1)  
WSMR (1)

Ft Carson (5)  
USAERDAA (1)  
USAERDAW (1)  
Army Dep (1) except  
LBAD (10)  
SAAD (30)  
TOAD (14)  
SHAD (3)  
Ft Gillem (5)  
USA Dep (1)  
Sig Sec USA Dep (1)  
Units org under fol TOE:  
29-134 (1)  
29-136 (1)  
29-207 (2)  
29-610 (2)

NG: None

USAR: None

For explanation of abbreviations used see, AR 310-50.

DEPARTMENT OF THE ARMY  
US ARMY AG PUBLICATIONS CENTER  
1655 WOODSON ROAD  
ST. LOUIS, MISSOURI 63114

OFFICIAL BUSINESS  
PENALTY FOR PRIVATE USE \$300

POSTAGE AND FEES PAID  
DEPARTMENT OF THE ARMY  
DOD 314



**This page only for NON-SOFTWARE-related TM errors/improvements.**

RECOMMENDED CHANGES TO EQUIPMENT TECHNICAL PUBLICATIONS



*THEN...JOT DOWN THE DOPE ABOUT IT ON THIS FORM. CAREFULLY TEAR IT OUT. FOLD IT AND DROP IT IN THE MAIL.*

**SOMETHING WRONG WITH THIS PUBLICATION?**

FROM: (PRINT YOUR UNIT'S COMPLETE ADDRESS)

DATE SENT

PUBLICATION NUMBER

PUBLICATION DATE

PUBLICATION TITLE

BE EXACT PIN-POINT WHERE IT IS

PAGE NO.	PARA-GRAPH	FIGURE NO.	TABLE NO.
----------	------------	------------	-----------

IN THIS SPACE TELL WHAT IS WRONG AND WHAT SHOULD BE DONE ABOUT IT:

TEAR ALONG PERFORATED LINE

PRINTED NAME GRADE OR TITLE AND TELEPHONE NUMBER

SIGN HERE

DA FORM 2028-2  
1 JUL 79

PREVIOUS EDITIONS ARE OBSOLETE

P.S.—IF YOUR OUTFIT WANTS TO KNOW ABOUT YOUR RECOMMENDATION MAKE A CARBON COPY OF THIS AND GIVE IT TO YOUR HEADQUARTERS

